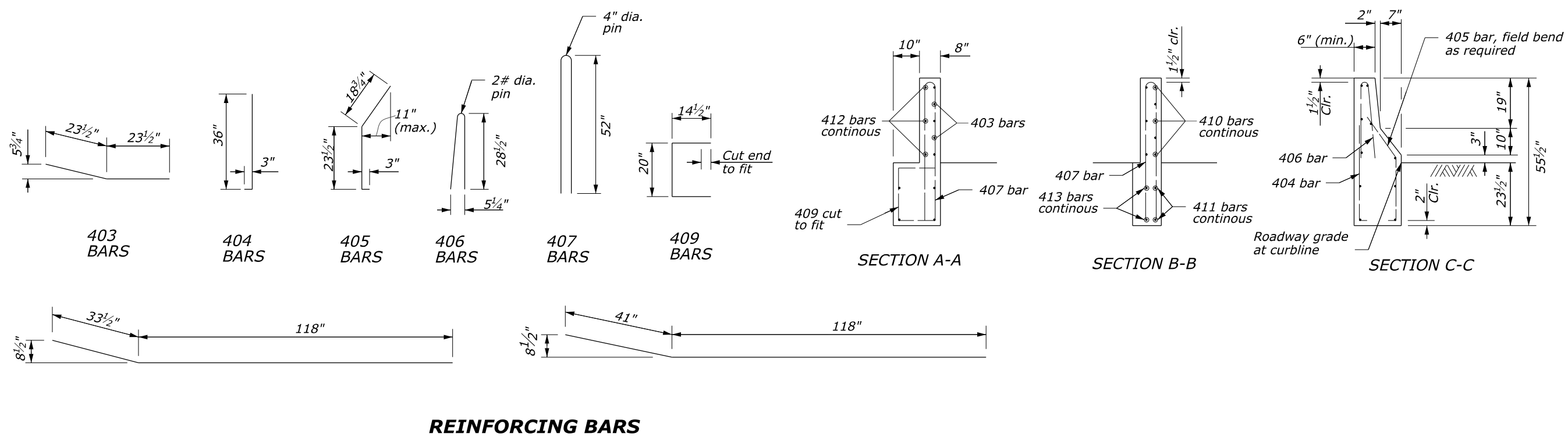


- NOTES:**
1. **CONCRETE:** Provide Structural Concrete Class A(AE), with a specified minimum 28-day compressive strength (F'_c) of 4.35 kips/in. Vibrate all concrete. Chamfer exposed edges $\frac{3}{4}$ inch unless otherwise shown. Do not use calcium chloride additives in the concrete.
 2. Provide a minimum $1\frac{1}{2}$ -inch concrete covering to the face of any bar unless otherwise shown. All bars are #4.
 3. **FINISHING CONCRETE:** Finish all concrete surfaces with a Class 1 finish unless otherwise specified.



NO SCALE

U.S. DEPARTMENT OF TRANSPORTATION, FHWA OFFICE OF FEDERAL LANDS HIGHWAY	EFLHD DETAIL E617-32
G4 W-BEAM GUARDRAIL FLARED BACK PARAPET WALL AND SAFETY SHAPE TRANSITION	SPECIFICATION FP-24, FP-14
	APPROVED FOR USE 05/2024