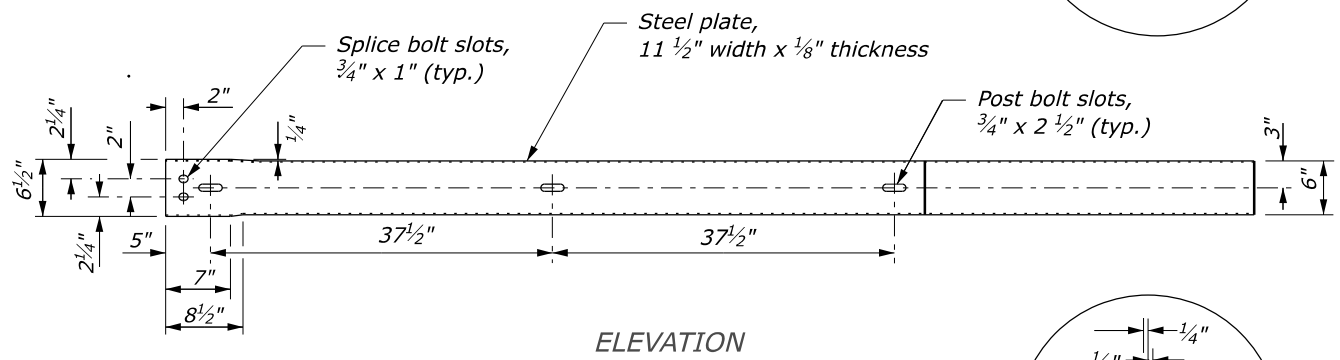
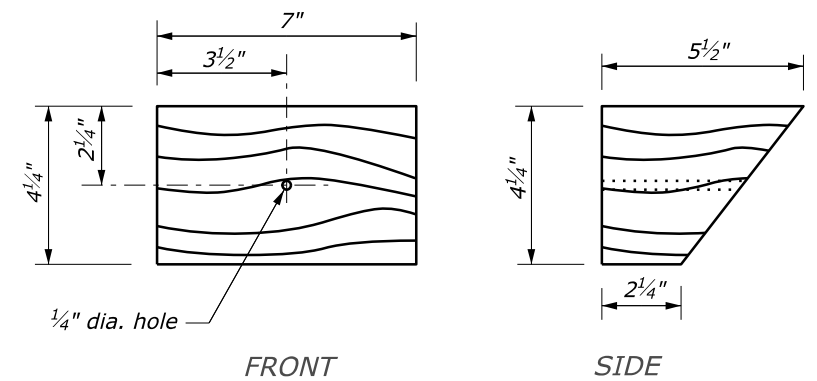


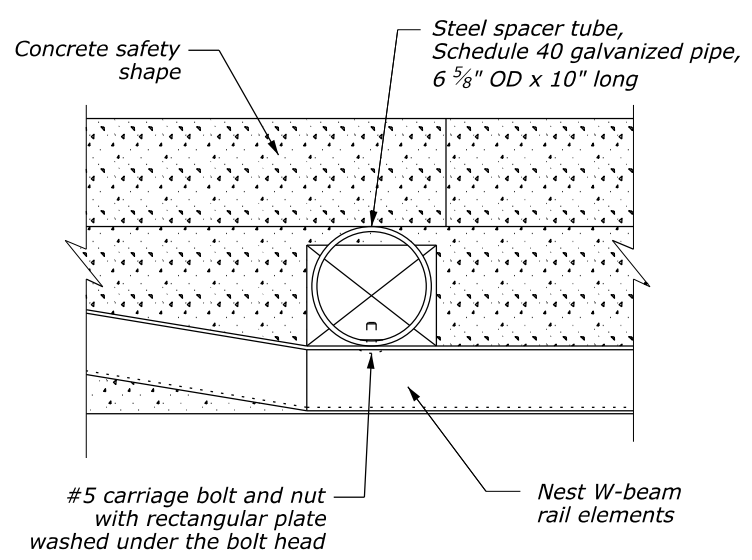
PLAN



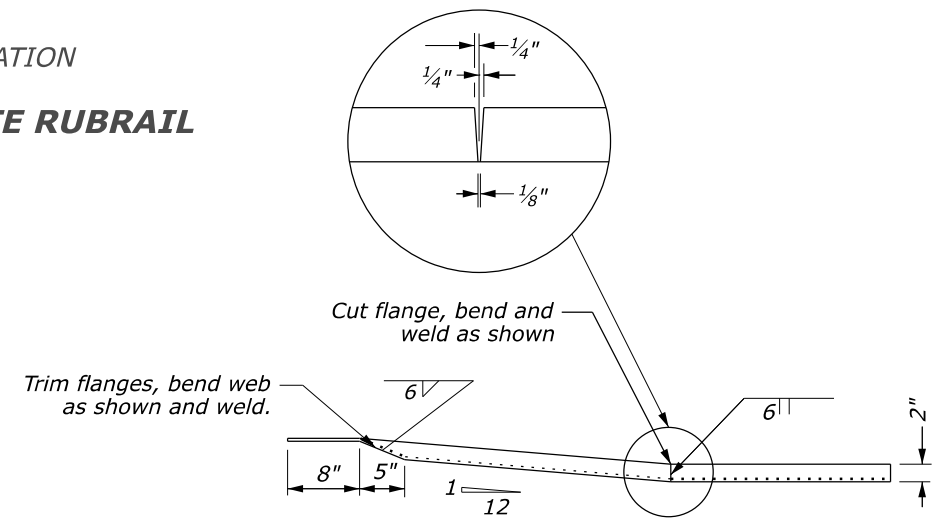
ELEVATION  
**BENT PLATE RUBRAIL**



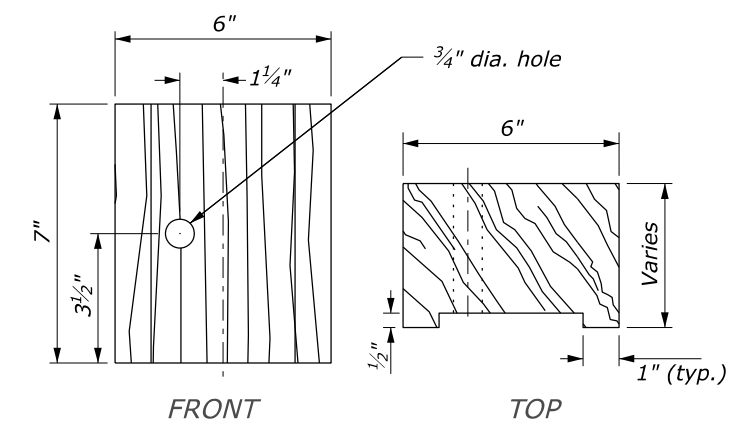
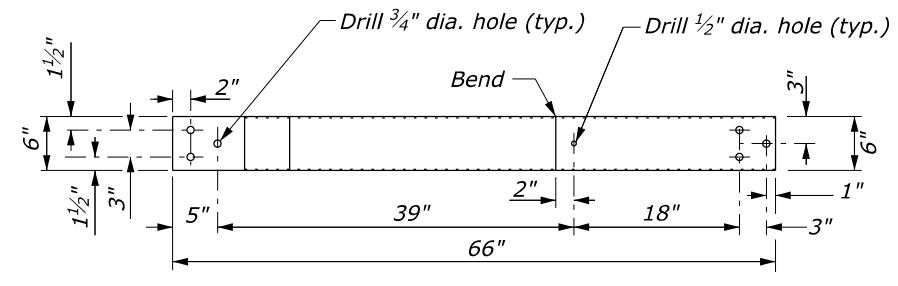
FRONT SIDE  
**WOOD BLOCKOUT FOR RUBRAIL ON CONCRETE SAFETY SHAPE**



**STEEL SPACER BLOCK**



ELEVATION  
**C6" X 1/2" RUBRAIL**



FRONT TOP  
**WOOD BLOCKOUT FOR RUBRAIL ON STEEL POSTS**

**NOTES:**

1. Attach rubrail end flush with sloped toe of safety shape. Shop fabricate the C6" x 1/2" rubrail end to be consistent with the slope of safety shape. Both clockwise and counterclockwise fabrications may be required.
2. Dimensional tolerances not shown or implied are intended to be those consistent with the proper functioning of the part, including its appearance, and accepted manufacturing practices.

NO SCALE

U.S. DEPARTMENT OF TRANSPORTATION, FHWA OFFICE OF FEDERAL LANDS HIGHWAY	EFLHD DETAIL E617-29
<b>G4 W-BEAM GUARDRAIL CONNECTION TO STRUCTURE SAFETY SHAPE FACE RUBRAIL</b>	SPECIFICATION FP-24, FP-14 APPROVED FOR USE 05/2024