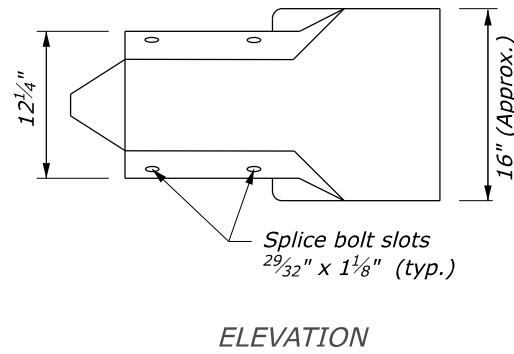
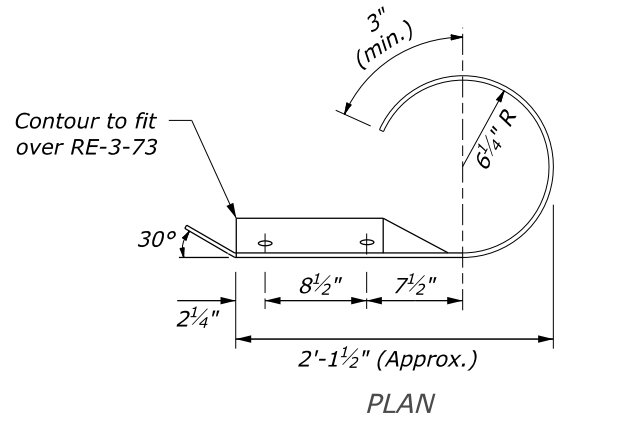
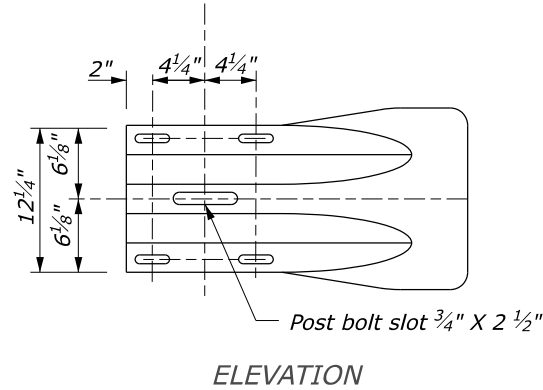
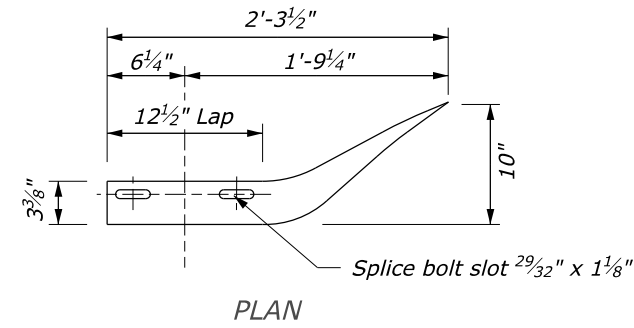


NOTES:

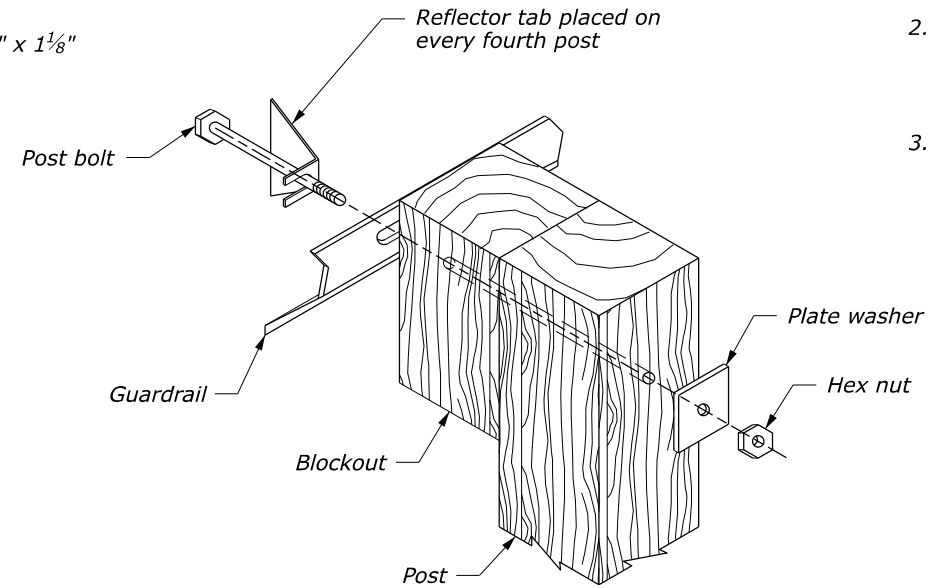
1. Rounded or flared end sections are acceptable alternates to buffered end sections and type 1 end sections on terminal sections at the trailing ends of guardrail runs on the right side of multilane roadways and where shown in the plans on the left side of multilane roadways as approved.
2. The curb and curb and gutter shapes are shown for illustration only. Use actual curb and curb and gutter shapes and dimensions as shown in the plans.
3. Alternate reflector tab shapes are acceptable as approved.



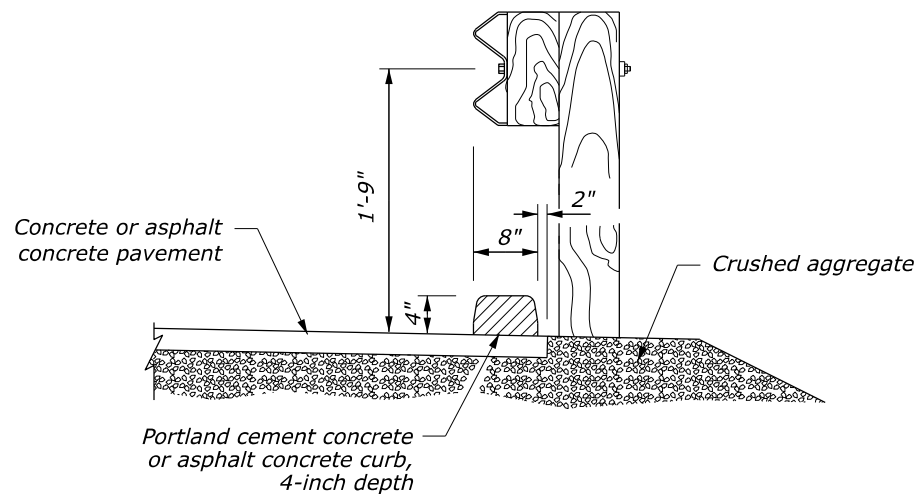
**ROUND END SECTION
ARTBA RE-6-79**



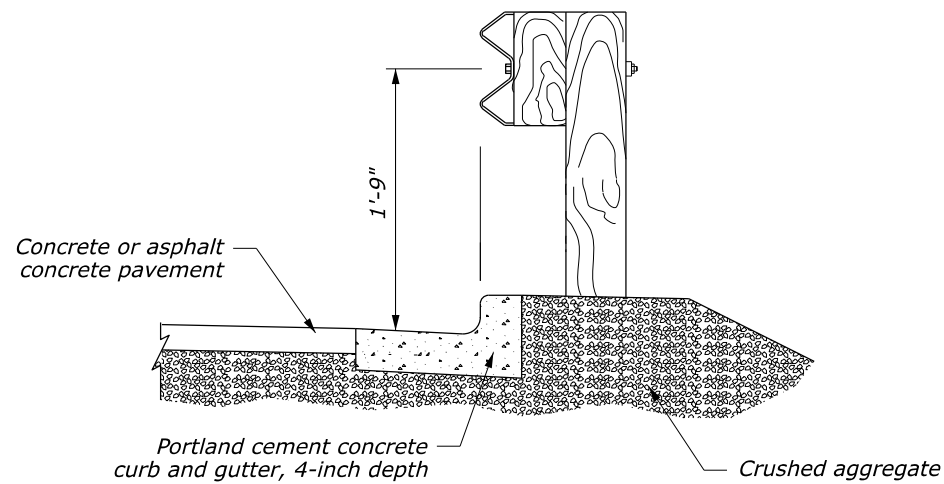
**FLARED END SECTION
ARTBA RE-5-76**



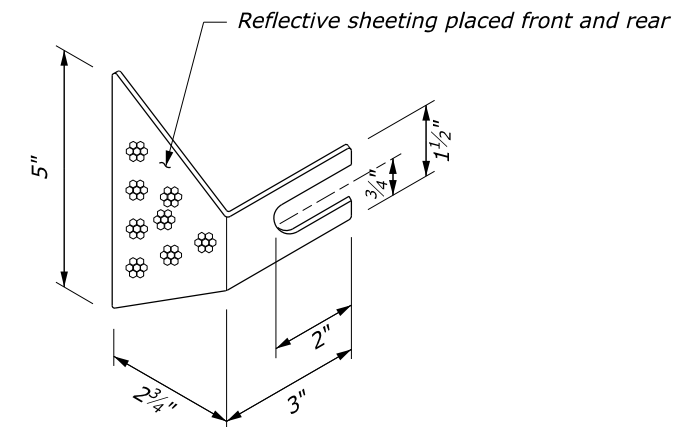
SYSTEM ASSEMBLY



**PLACEMENT OF GUARDRAIL
AT CURB LOCATIONS**



**PLACEMENT OF GUARDRAIL
AT CURB AND GUTTER LOCATIONS**



REFLECTOR TAB

NO SCALE

U.S. DEPARTMENT OF TRANSPORTATION, FHWA
OFFICE OF FEDERAL LANDS HIGHWAY

**G4 W-BEAM GUARDRAIL
SUPPLEMENT INSTALLATIONS**

EFLHD DETAIL
E617-23

SPECIFICATION
FP-14

APPROVED FOR USE
05/2024