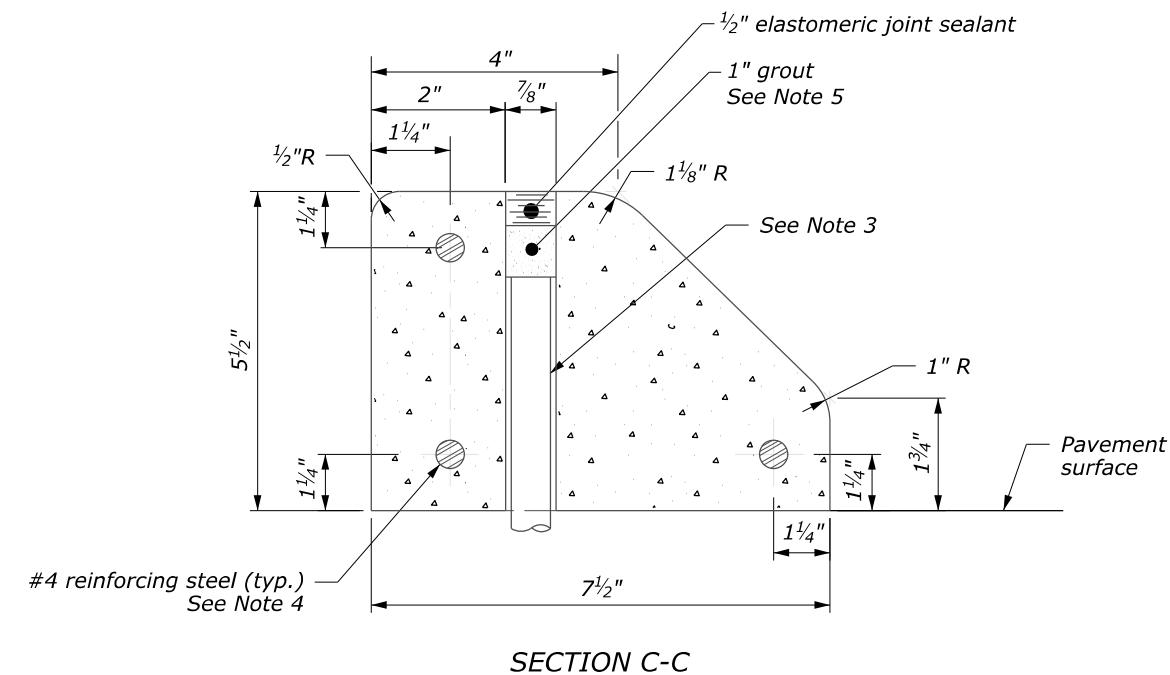
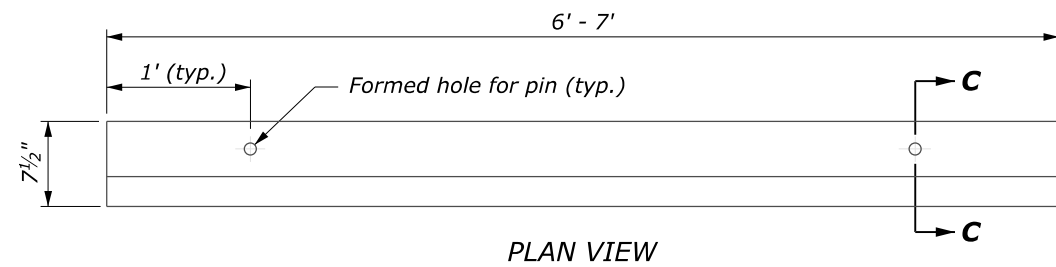


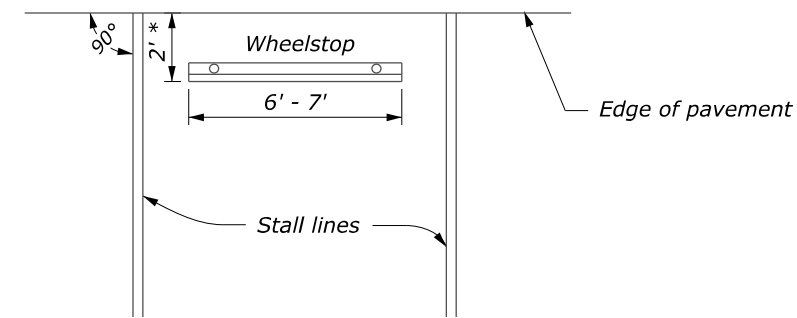
**NOTES:**

1. Center wheelstops between and perpendicular to stall lines.
2. Variations in wheelstops will be allowed to meet manufacturer's standards as approved.
3. Pin the wheelstops in place according to Subsection 609.08.
4. Extend the reinforcing steel to within 1 inch of ends of wheelstop.
5. Place grout conforming to Subsection 725.13(a)(2) as shown.

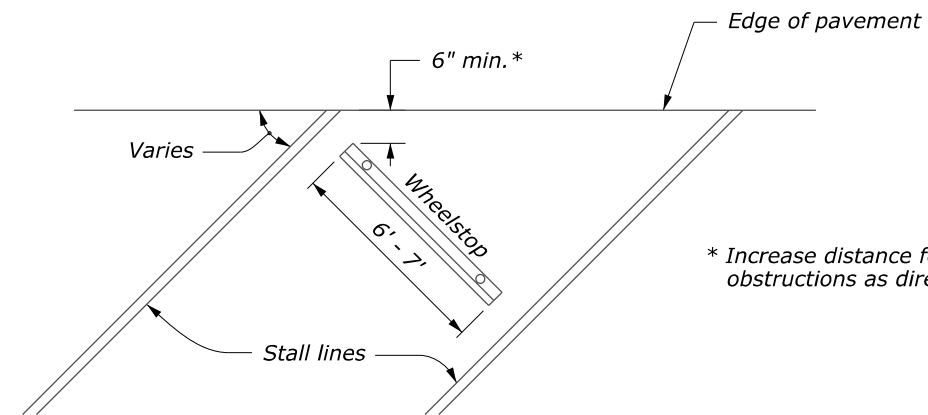
**CONCRETE WHEELSTOP WITH DRAIN**



**CONCRETE WHEELSTOP WITHOUT DRAIN**



**HEAD-ON PARKING**



**ANGULAR PARKING**

**WHEELSTOP LAYOUT**

NO SCALE

U.S. DEPARTMENT OF TRANSPORTATION, FHWA OFFICE OF FEDERAL LANDS HIGHWAY	EFLHD DETAIL E609-03
<b>CONCRETE WHEELSTOP</b>	SPECIFICATION FP-14
	APPROVED FOR USE 05/2024