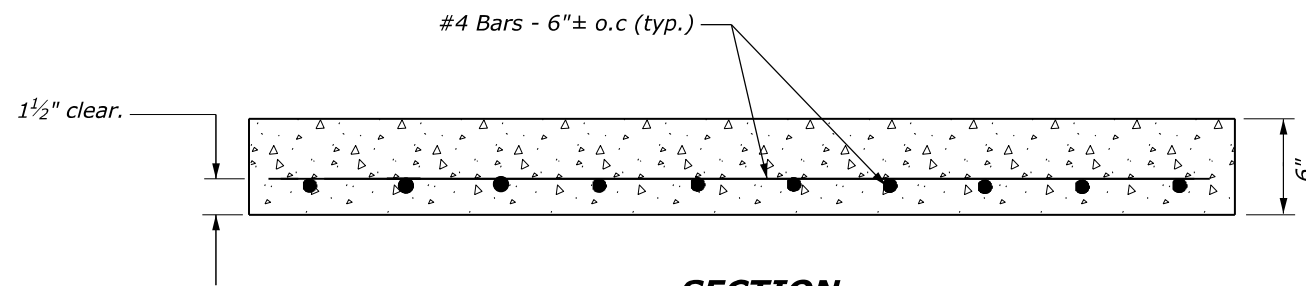


PLAN



SECTION

NOTES:

1. Set concrete cap on a 2-inch mortar bed.
2. Field measure the length and width of the caps to completely cover the existing inlets.
3. Cut the top of the existing inlets to a depth such that 6 inches remain above the highest existing culvert tying into the inlet.
4. Provide a 1½-inch clearance to the outside face for all reinforcing bars.

M:\Standards_and_Details\EFLHD_Detail-Drawings\FP-24\604-Manholes, Inlets and Catch Basins\604-09_detail.dgn [Sheet] 30 May 2024 2:25 PM

NO SCALE

U.S. DEPARTMENT OF TRANSPORTATION, FHWA OFFICE OF FEDERAL LANDS HIGHWAY		EFLHD DETAIL E604-09
PRECAST CONCRETE INLET CAP		SPECIFICATION FP-24, FP-14
		APPROVED FOR USE 05/2024