

Turnagain Pass Master Plan

Public Webinar

SEPTEMBER 2024



Session Overview

- Presenter Introductions
- Master Plan Overview
- Overview of Proposed Projects, Trails, & Programs
- Engineering Assumptions
- Conceptual Designs & Cost Estimates of Select Projects
- Discussion
- Wrap Up & What's Next



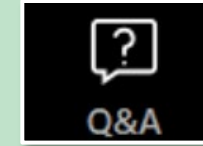
Meeting Format

Zoom Webinars

- During the presentation portion of the webinar participants will not be able to unmute themselves to speak, but comments and questions can be placed in the Q&A, or in the chat, at any time. **Renee** will be monitoring the Q&A and chat for questions throughout the meeting.
- Following the presentation, the project team will answer questions that have been submitted via Q&A or chat and will open the floor for additional questions.
- You can either type your questions in the chat or use the “Raise Hand” feature to ask your question verbally.
- When called upon, please unmute your microphone.
- There will be ample time for questions to be asked and answered following the presentation.

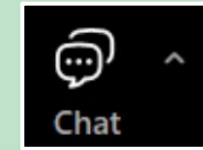
How to Comment

1



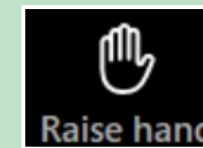
Click the **Q&A** icon to ask a question.

2



Click the **Chat** icon to write a comment or ask a question.

3



Click the **Raise Hand** icon to be called on during the discussion portion of the meeting.

Today's Presenters



Renee Whitesell, PTP | DOWL
Project Manager



Cole Grisham, AICP | FHWA
WFLHD Project Manager



Elena Feghali, EIT | DOWL
Transportation Engineer

Master Plan Focus Area



Goals & Themes



Goals Include:

1. Developing a joint vision for the Turnagain Pass corridor.
2. Identifying current needs, forecasting future needs, and creating a prioritized list of projects to address these needs.
3. Increasing the long-term sustainability, safety, and access to forest lands for travelers and users.

Additional Themes Include:

1. Improving capacity at recreation sites between seasons.
2. Improving connections between facilities, including trail networks and multi-modal connections.
3. Improving pull outs and parking areas along the corridor.
4. Addressing snow removal and management needs at recreation sites.



Master Plan Timeline



**WE ARE
HERE**

Phase 1 Tasks

Phase 2 Tasks



Existing Conditions
Analysis



Demand Management
& Needs Assessment



Proposed Projects
& Prioritization



Environmental
Analysis, if needed



Final Report

Stakeholder & Public Involvement

Engineering Assumptions

- These are indicative concepts using desktop analysis
- Projects are focused on forest and recreation access
- Cost estimates use 2024-unit costs and include broad contingencies
- Maintenance and operations costs and responsibilities are not yet considered
- Proposed parking space counts are based on existing counts and stakeholder needs



Proposed Projects

Categories

- Parking Area Improvements
- Paths and Trails
- Programs

How We Got Here

- Input from local agencies and stakeholders
- Project prioritization using a prioritization matrix
- Maintaining the project goals and focusing on meaningful engagement with the forest



Parking Area Improvement Projects

Projects with Conceptual Design and Cost Estimates

- Raft Launch/River Access Parking Lot
- Johnson Pass Trailhead Parking Lot
- Sunburst Parking Lot
- Center Ridge Trailhead Parking Lot
- Motorized Access Parking Lot (Moto Lot)
- Tincan Pullout/Parking Area

Projects that are Described Only (No Conceptual Design)

- Welcome to Kenai Sign Parking Lot
- Upper Ingram Trailhead Parking Area



Paths and Trails Projects

Projects with Conceptual Design and Estimates

- Multi-Use Pathway addition and extension

Projects that are Described Only (No Conceptual Design)

- Mountain Bike Trails
- New Trails / New Trail Connections



Programs

Program Description

- Facility and Winter Maintenance Management Strategy



New Tincan Parking Lot



Motorized Access Parking Lot (Moto Lot)

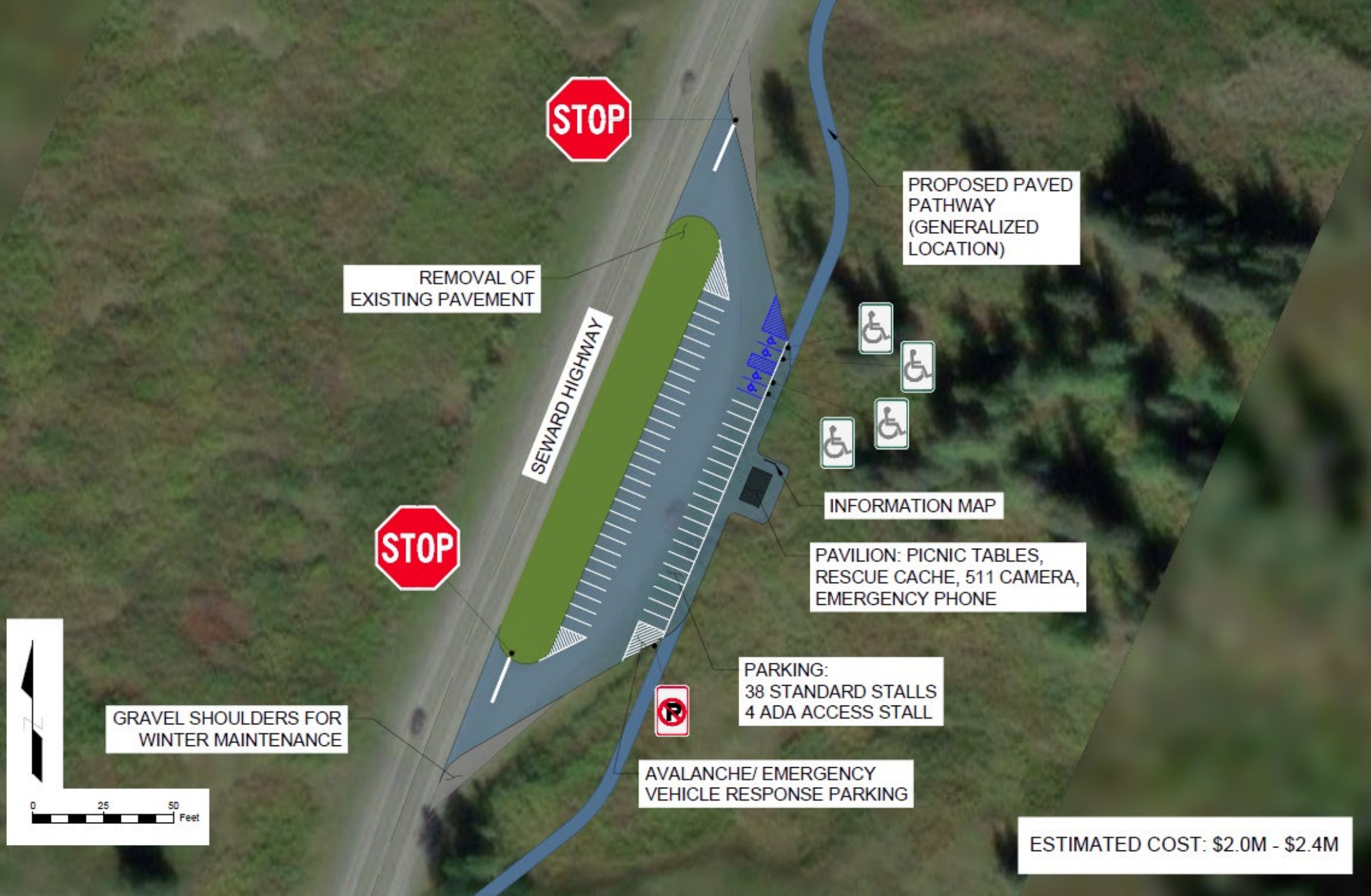


ESTIMATED COST: \$550K - \$700K

Center Ridge Parking Lot



New Sunburst Parking Lot



REMOVAL OF EXISTING PAVEMENT

SEWARD HIGHWAY

PROPOSED PAVED PATHWAY (GENERALIZED LOCATION)

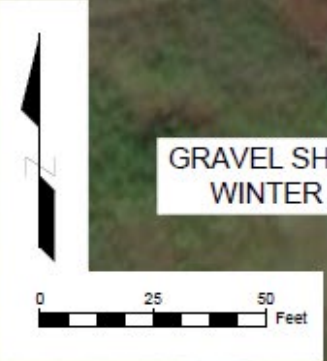
INFORMATION MAP

PAVILION: PICNIC TABLES, RESCUE CACHE, 511 CAMERA, EMERGENCY PHONE

PARKING: 38 STANDARD STALLS 4 ADA ACCESS STALL

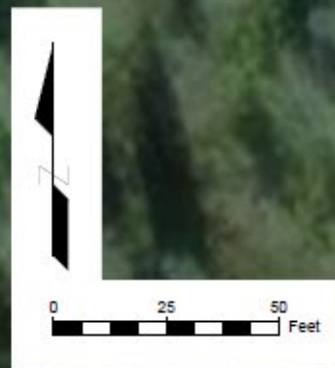
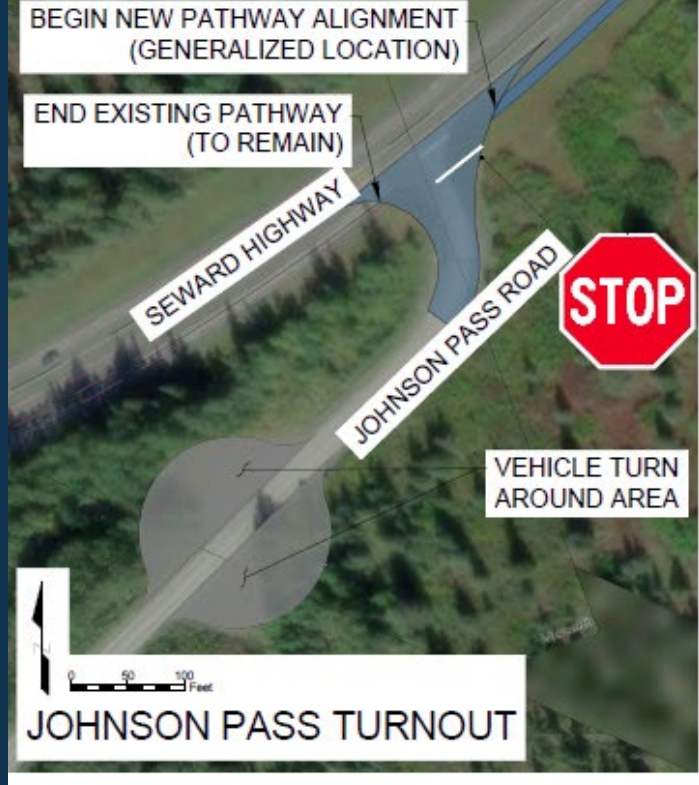
AVALANCHE/ EMERGENCY VEHICLE RESPONSE PARKING

GRAVEL SHOULDERS FOR WINTER MAINTENANCE



ESTIMATED COST: \$2.0M - \$2.4M

Johnson Pass North Parking Lot



PARKING:
10 UNMARKED
GRAVEL STALLS

PET WASTE STATION
AT TRAILHEAD

JOHNSON PASS
TRAIL NORTH - INHT

ESTIMATED COST: \$1.6M - \$1.9M

JOHNSON PASS
WAGON ROAD

NEW PROPOSED
GRAVEL LOT AND
DRIVEWAYS

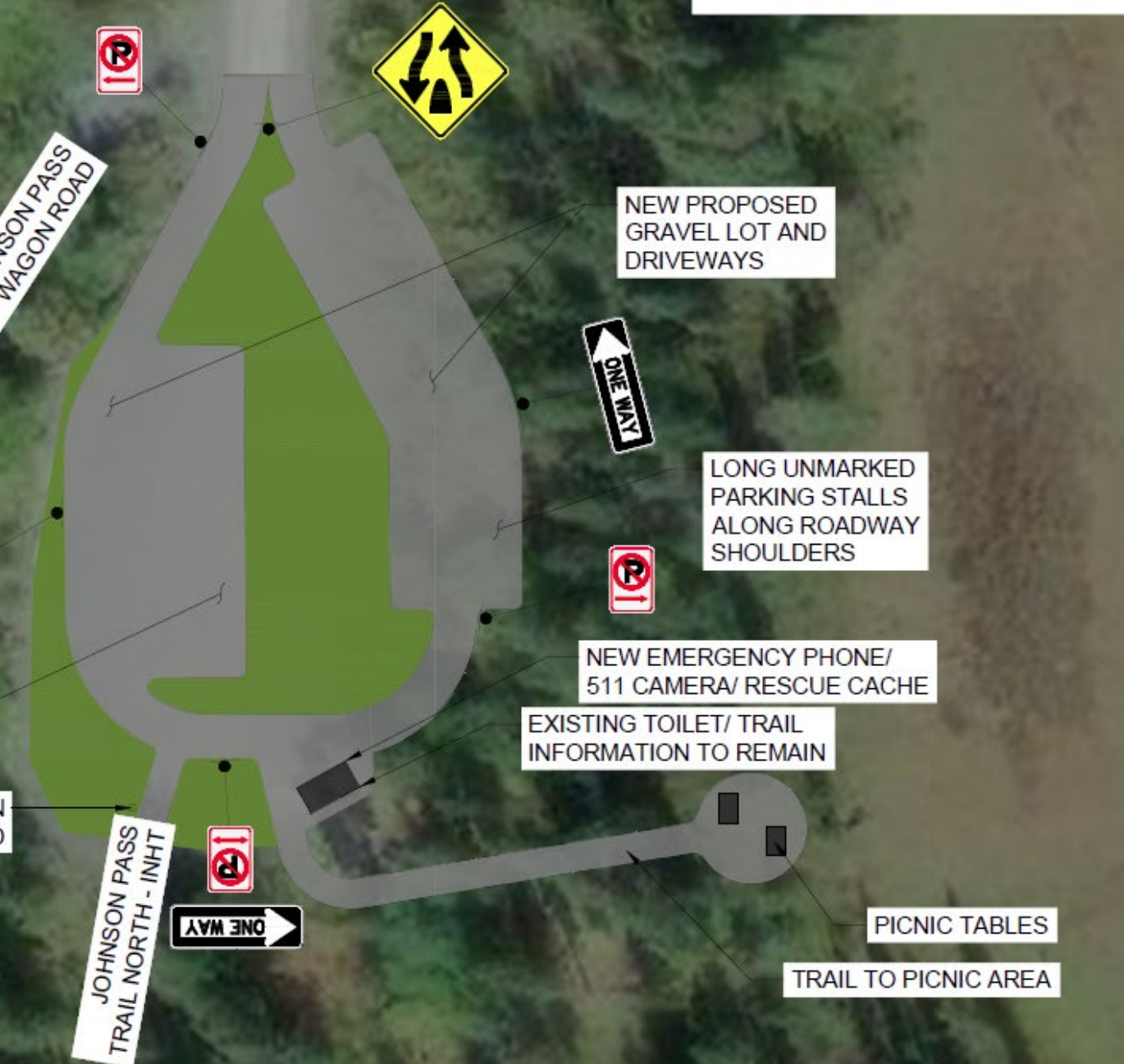
LONG UNMARKED
PARKING STALLS
ALONG ROADWAY
SHOULDERS

NEW EMERGENCY PHONE/
511 CAMERA/ RESCUE CACHE

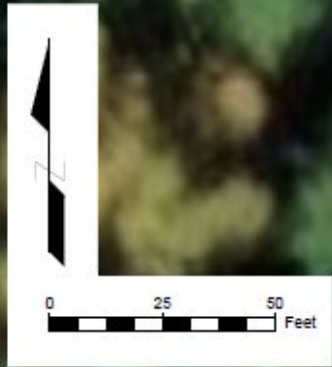
EXISTING TOILET/ TRAIL
INFORMATION TO REMAIN

PICNIC TABLES

TRAIL TO PICNIC AREA



Raft Launch / River Access Parking Lot



SEWARD HIGHWAY

UPDATED BOAT RAMP

EAST FORK SIXMILE CREEK

INFORMATION MAP, BENCHES

PARKING:
8 STANDARD STALLS
1 ADA ACCESS STALL
3 LARGE STALLS

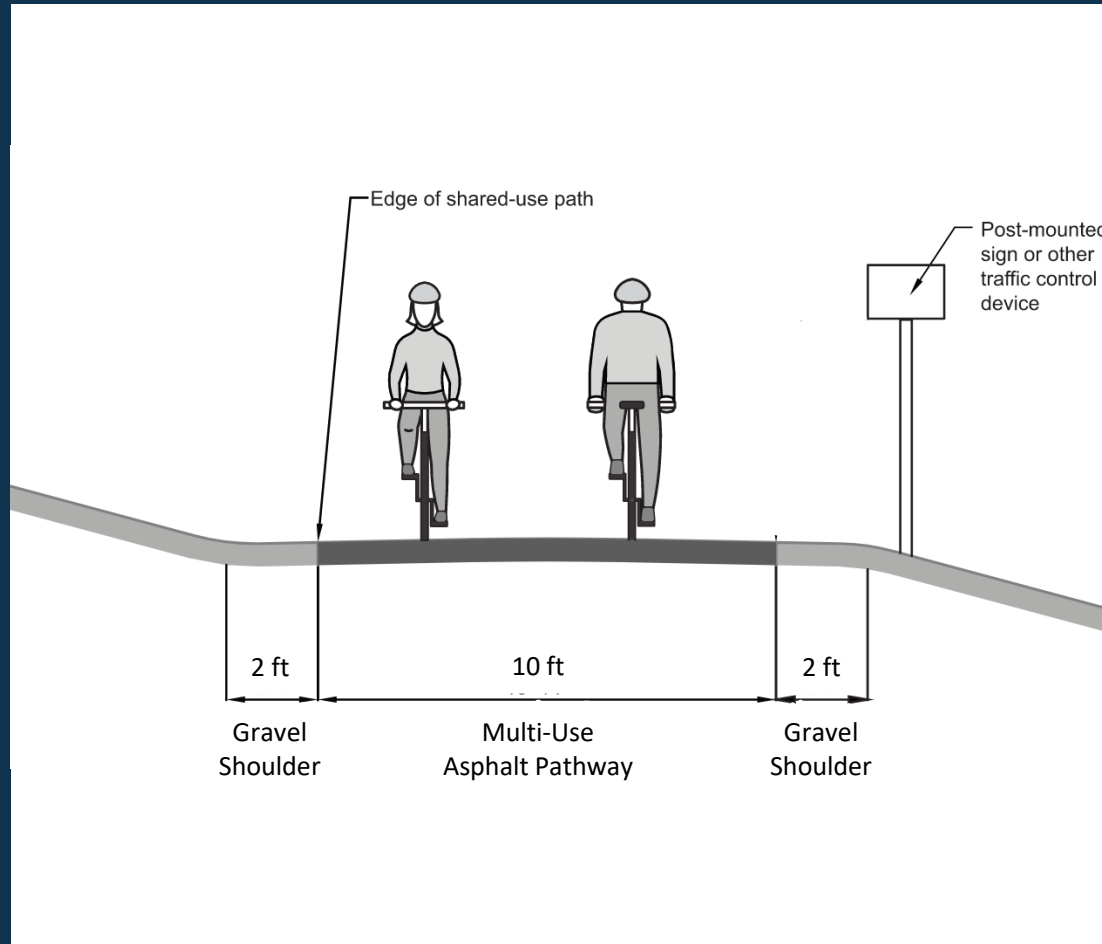


PAVEMENT REMOVAL

EXISTING PATHWAY TO REMAIN

ESTIMATED COST: \$1.2M - \$1.5M

Multiuse Pathway Addition / Extension



	Cost Estimate	Start	End	Distance
Pathway 1	\$9.9M - \$11.9M	Johnson Pass Parking Lot	Granite Creek Campground	1.7 mi.
Pathway 2	\$7.6M - \$9.2M	Granite Creek Campground	Sunburst Parking Lot	1.3 mi.
Pathway 3	\$7.2M - \$8.7M	Sunburst Parking Lot	Center Ridge Parking Lot	1.3 mi.
Pathway 4	\$9.1M - \$11.1M	Center Ridge Parking Lot	New Tincan Parking Lot	1.5 mi.
Pathway 5	\$17.5M - \$21.1M	New Tincan Parking Lot	Upper Ingram Trailhead	2.9 mi.
Pathway 6	\$18.5M - \$22.3M	Upper Ingram Trailhead	Base of Pass	3.0 mi.

New Wayfinding Signs



Discussion



What's Next?

- Memorandum 5: Conceptual Designs and Cost Estimates – October 2024
- Memorandum 6: Management and Maintenance Strategy – October 2024
- Draft Turnagain Pass Master Plan Public Webinar – November 2024
- Final Turnagain Pass Master Plan – December 2024



We want your feedback!

Visit the project website www.turnagainpassmasterplan.com to review the draft concept designs and cost estimates.

Email nicholas.grisham@dot.gov to provide comments or ask questions of the project team. Comments and questions specifically related to these draft concepts will be most helpful if they are provided before **September 30, 2024**, to allow the project team to make changes prior to drafting the Final Plan.

Thank you!



Project Contacts:

- **Cole Grisham, AICP** | WFLHD Project Manager |
Nicholas.Grisham@dot.gov | (202) 839-1409
- **Joselyn Biloon** | DOT&PF Kenai Area Planner |
Joselyn.Biloon@alaska.gov | (907) 269-0508
- **Lisa Featherly** | USFS Recreation Planner |
Lisa.Featherly@usda.gov | (907) 754-2351

Website:

www.turnagainpassmasterplan.com



SCAN ME!

Scan this code with your smartphone camera to view the website.

