



Crater Lake National Park

Source: FHWA



<https://highways.dot.gov/federal-lands/flap/or>

# DISCLAIMER

---

- Except for the statutes and regulations cited, the contents of this presentation do not have the force and effect of law and are not meant to bind the States or the public in any way. This presentation is intended only to provide information regarding existing requirements under the law or agency policies.



Source: FHWA

# AGENDA

---

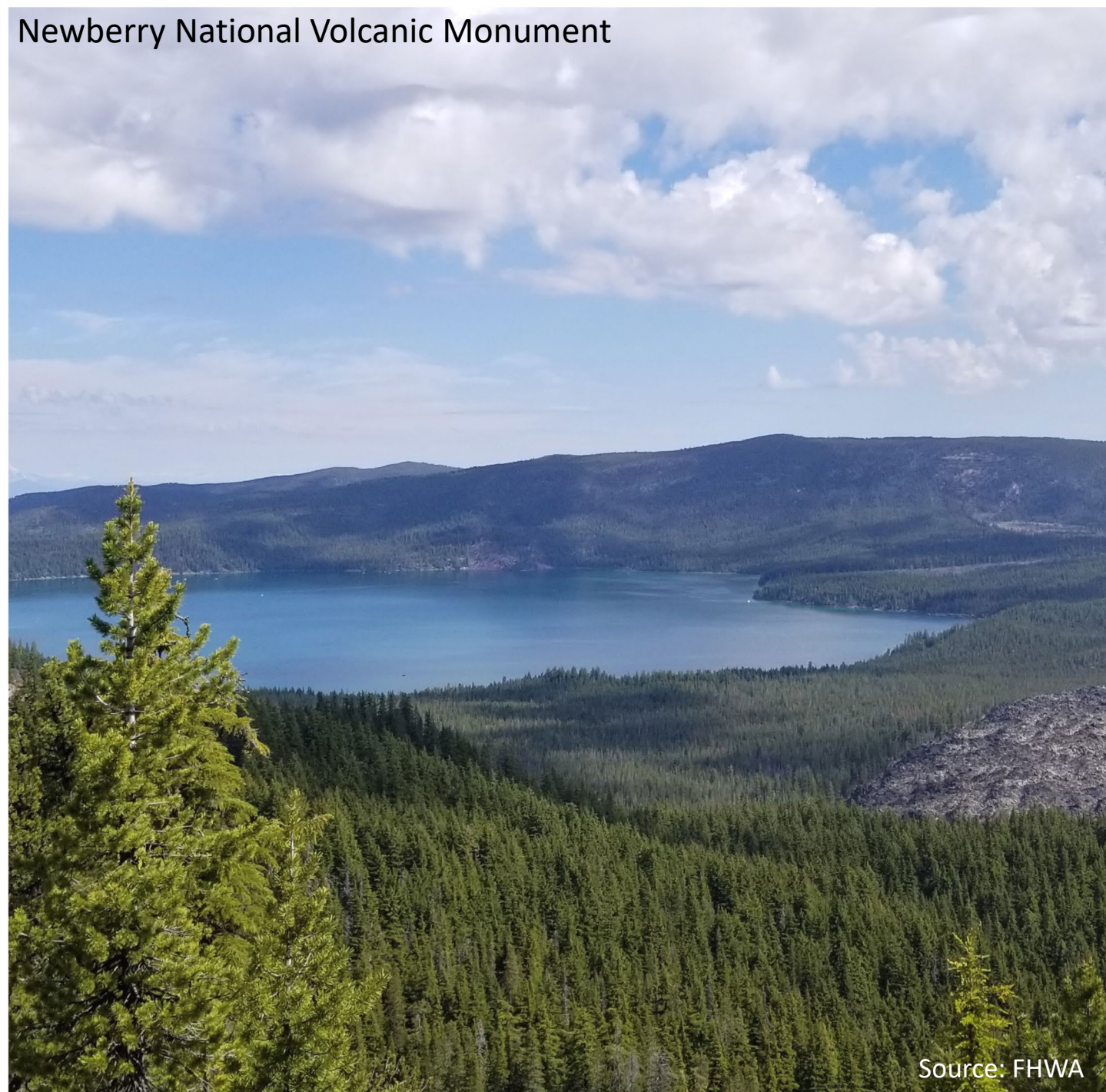
- Federal Lands Highway Overview
- Infrastructure Investment and Jobs Act (IIJA) & Federal Lands Access Program (FLAP)
- Programming Decision Committee (PDC) & Transportation Advisory Group (TAG)
- Investment Strategies
- Proposal Selection Process
- Tips for Developing a Strong Proposal

# WESTERN FEDERAL LANDS HIGHWAY DIVISION (WFLHD)

---

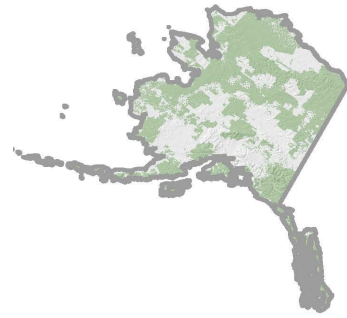
- Located in Office of Federal Lands Highway within the Federal Highway Administration (FHWA)
- Deliver projects that access or are in:
  - National Parks
  - National Wildlife Refuges
  - National Forests
  - Bureau of Land Management Lands
  - US Army Corp of Engineers Lands
  - Bureau of Reclamation Lands
  - Department of Defense

Newberry National Volcanic Monument



# FEDERAL LANDS HIGHWAY – DIVISION OFFICES

- WFL serves Alaska, Washington, Oregon, Idaho, Montana, and NW corner of Wyoming
- Provides:
  - Planning & Project Development
  - Construction contract advertisement, award, administration, and inspection
  - Technical services



Western Federal  
Lands  
**WFL**



Central Federal  
Lands  
**CFL**



Eastern Federal  
Lands  
**EFL**

# IIJA OVERVIEW

---

- 2021 Infrastructure Investment and Jobs Act (IIJA) (Public Law 117-58)
- Authorizes funding over a five-year period (fiscal years 2022 through 2026)
- Federal Lands Highway Program
- Funds allocated annually

# FEDERAL LANDS & TRIBAL TRANSPORTATION PROGRAMS

Annual \$ (FY22-FY26)	
Federal Lands Transportation Program (FLTP)	\$422-\$456 million
Federal Lands Access Program (FLAP)	\$286-\$309 million
Tribal Transportation Program (TTP)	\$578-\$628 million
Nationally Significant Federal Lands & Tribal Projects (NSFLTP) Program	\$55 million



Source: FHWA

# FEDERAL LANDS ACCESS PROGRAM

---

Improving *transportation facilities* that **provide access to, are adjacent to, or are located within** Federal Lands with a preference for high-use recreation sites and economic generators.



Source: FHWA

# FLAP OVERVIEW

---

- Administered per Title 23, USC 204
- Must be a public transportation facility, including highways, roads, bridges, trails, or transit systems
- Is located on, is adjacent to, or provides access to Federal Lands managed by these Federal Land Management Agencies (FLMAs):
  - National Park Service (NPS)
  - U.S. Forest Service (FS)
  - U.S. Fish and Wildlife Service (FWS)
  - Bureau of Land Management (BLM)
  - Bureau of Reclamation (BOR)
  - U.S. Army Corps of Engineers (USACE)
  - Department of Defense (DOD)
- Title or maintenance responsibility is vested with State, County, Local Government, or Tribe
- The Federal Lands Access Program focuses on ACCESS to FEDERAL LANDS

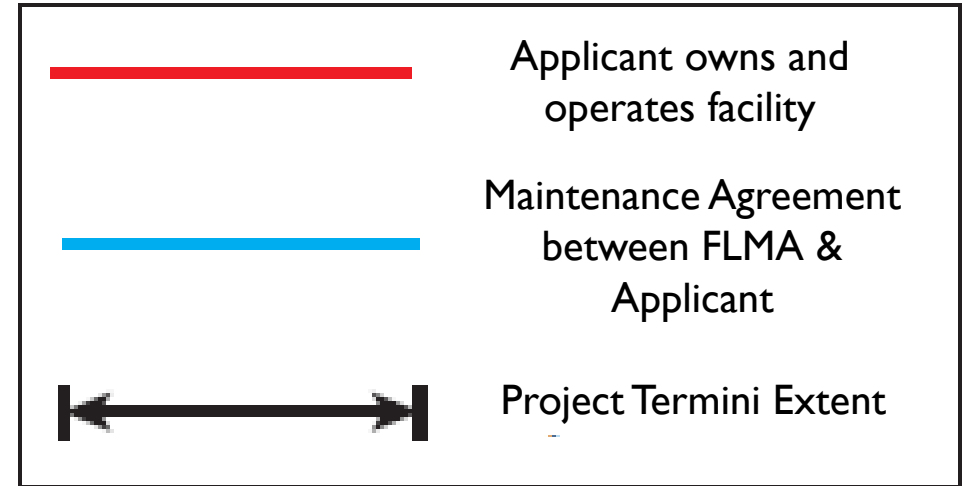
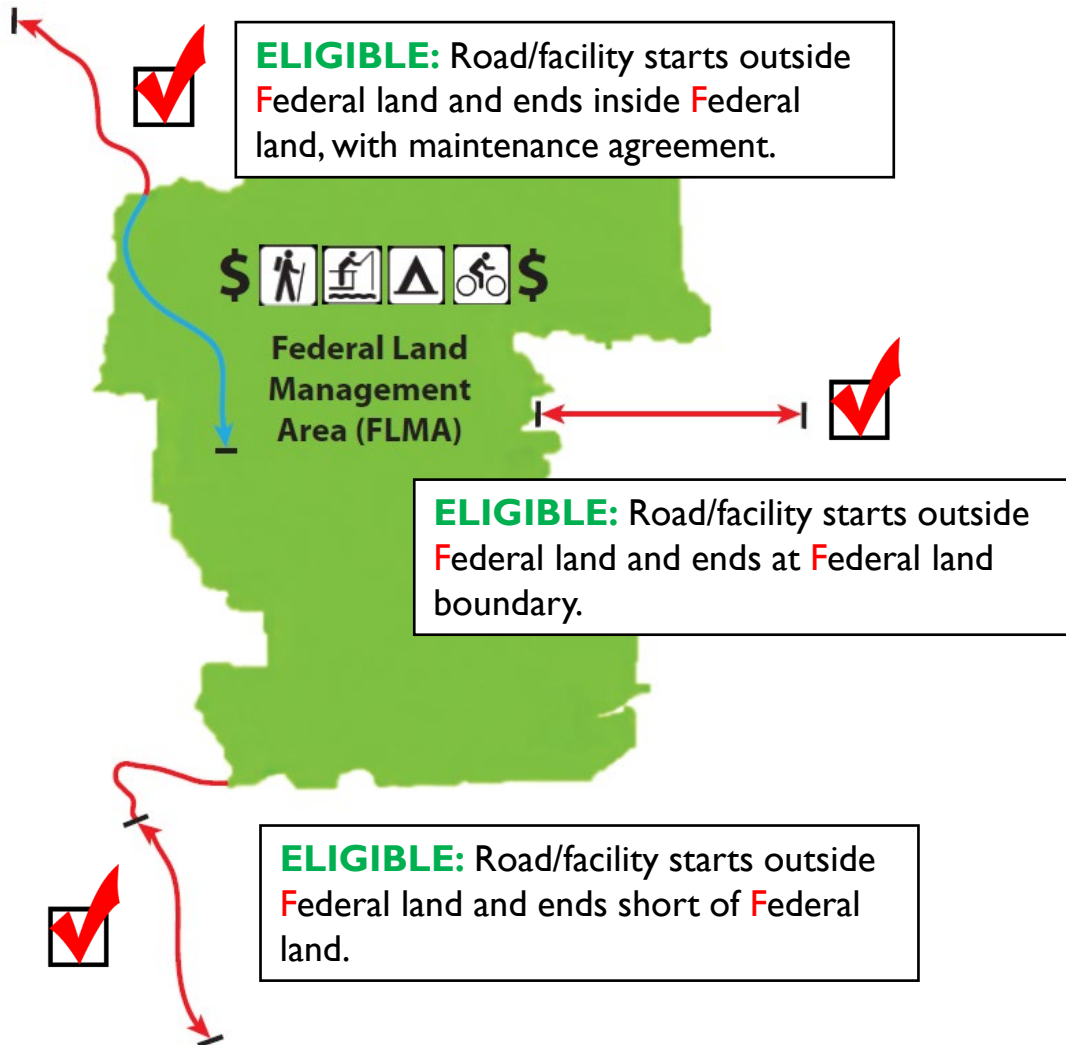


# FLAP CONTINUED

---

- FHWA Western Federal Lands has stewardship and oversight responsibility of all projects
- This is a transportation program, not a “competitive grant” program
- Proposals are submitted by the local agency with Federal Land Management Agency (FLMA) endorsement
  - *Early and ongoing coordination is key to success!*

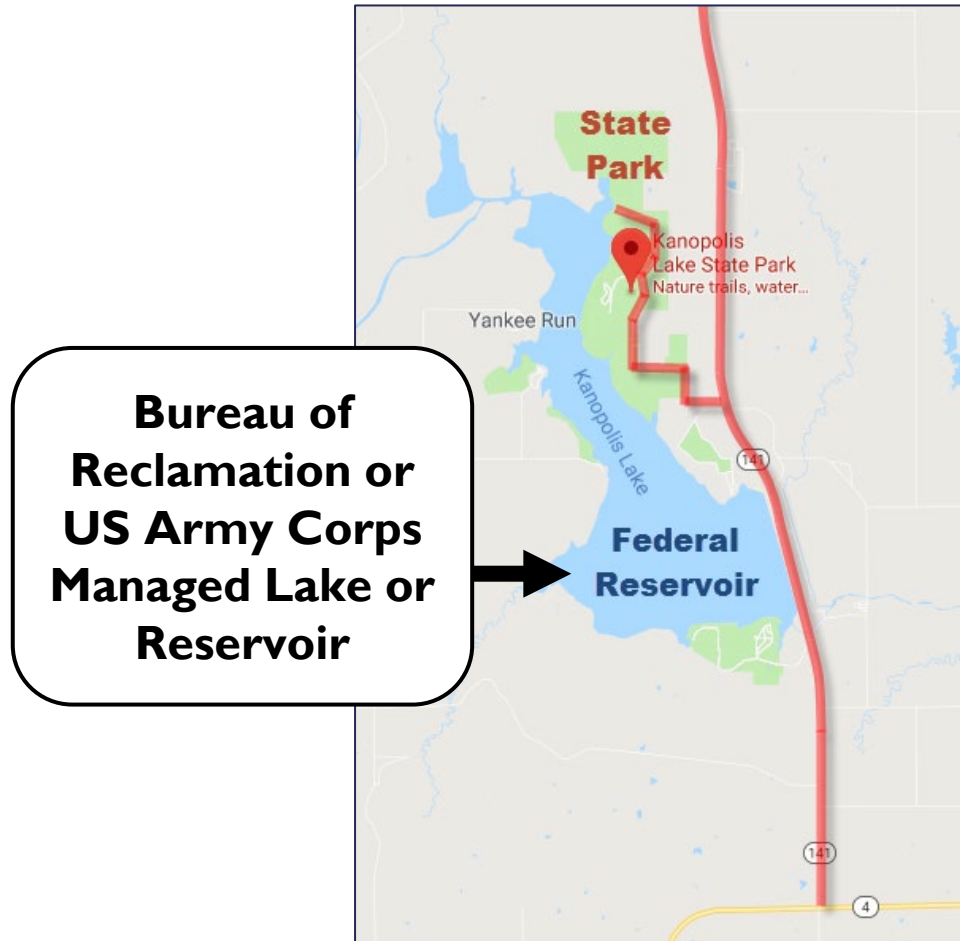
# FLAP ELIGIBILITY SCENARIO



## Notes:

- Tribal roads maintained by the tribe are **eligible**. BUT the roadway must access Federal Lands other than tribal (ex. NPS, FWS, etc.)
- Tribal lands are **not eligible** Federal Lands as the destination for this program (TTP)
- Land leased by the Federal Government is **not eligible**.

# FLAP ELIGIBILITY SCENARIO



## Common Scenario:

- Access to reservoir/lake is typically through State or County Park
- Roads leading to or within the Park that are not federally maintained: **eligible.**
- Potential to leverage FLAP, FLTP, State, and Local Funds

# WHERE CAN FUNDING BE SPENT?

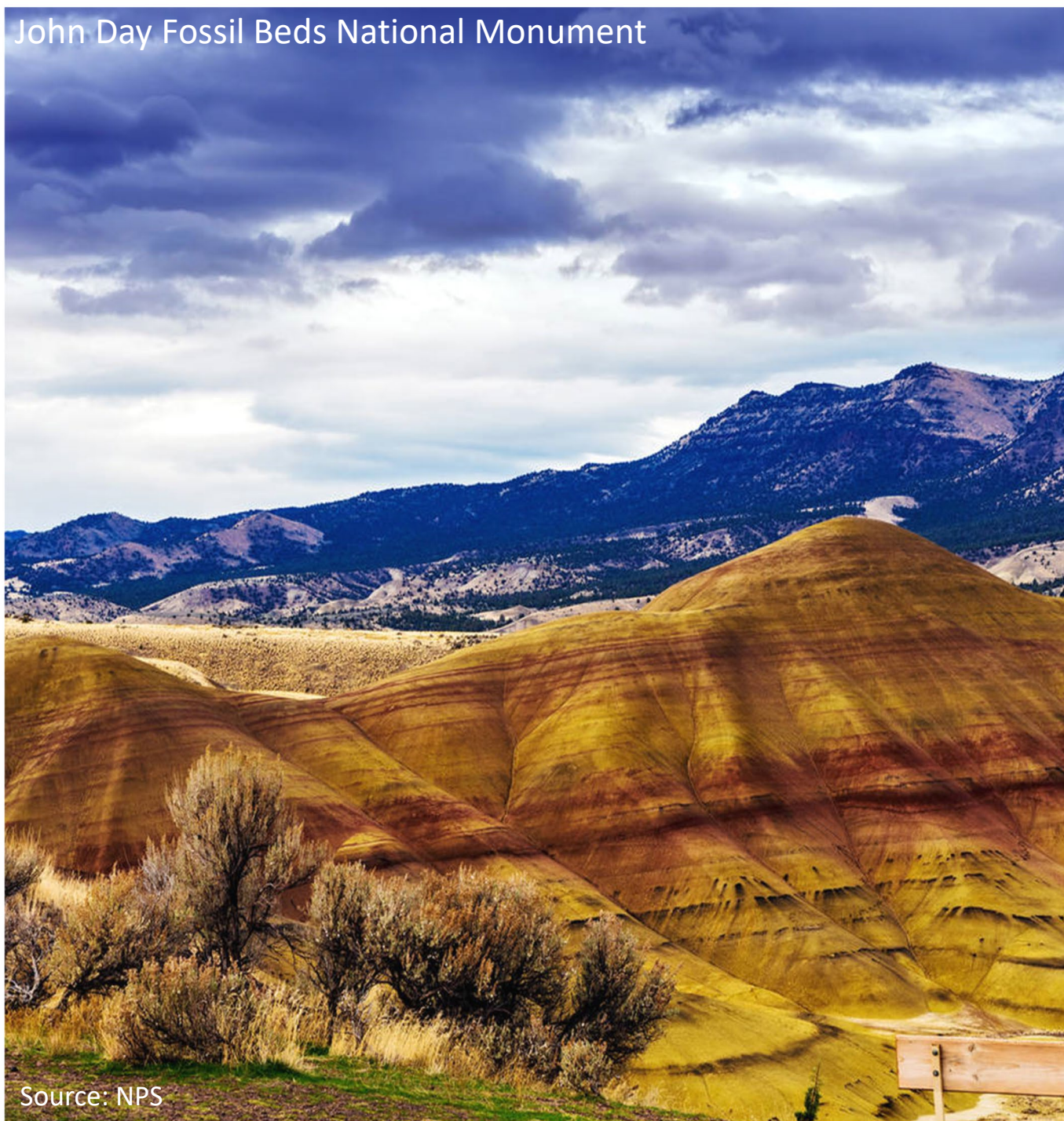
---

- Transportation facilities that provides access to Federal Lands, including:
  - *BLM*
  - *BOR*
  - *USACE*
  - *NPS*
  - *USFS*
  - *USFWS*
  - *DOD*

# PURPOSE OF THE PDC

---

Programming Decision Committee



# PDC MEMBERS AND RESPONSIBILITIES

---

- Members include:
  - Representative from FHWA (WFL – Planning, Programming and Environment Branch Chief) – Matt Miller
  - Representative from State Department of Transportation (ODOT – Region 1 Manager) – Rian Windsheimer
  - Representative from Local Agency (Association of Oregon Counties – County Road Program Director) – Brian Worley
- Must cooperate with each applicable Federal agency before final programming decisions.  
This is done by:
  - Local Public Agency (LPA) submitting application with FLMA endorsement
  - Each FLMA is on the Technical Advisory Group (TAG) and makes recommendations to the PDC.
  - TAG members provide regional priorities for their FLMA
- Solicit projects to program
  - WFL Program Manager facilitates the solicitation
- The committee shall give preference to projects that provide access to, are adjacent to, or are located within high-use Federal recreation sites or Federal economic generators as identified by the Secretaries of the appropriate FLMAs.

# PDC RESPONSIBILITIES

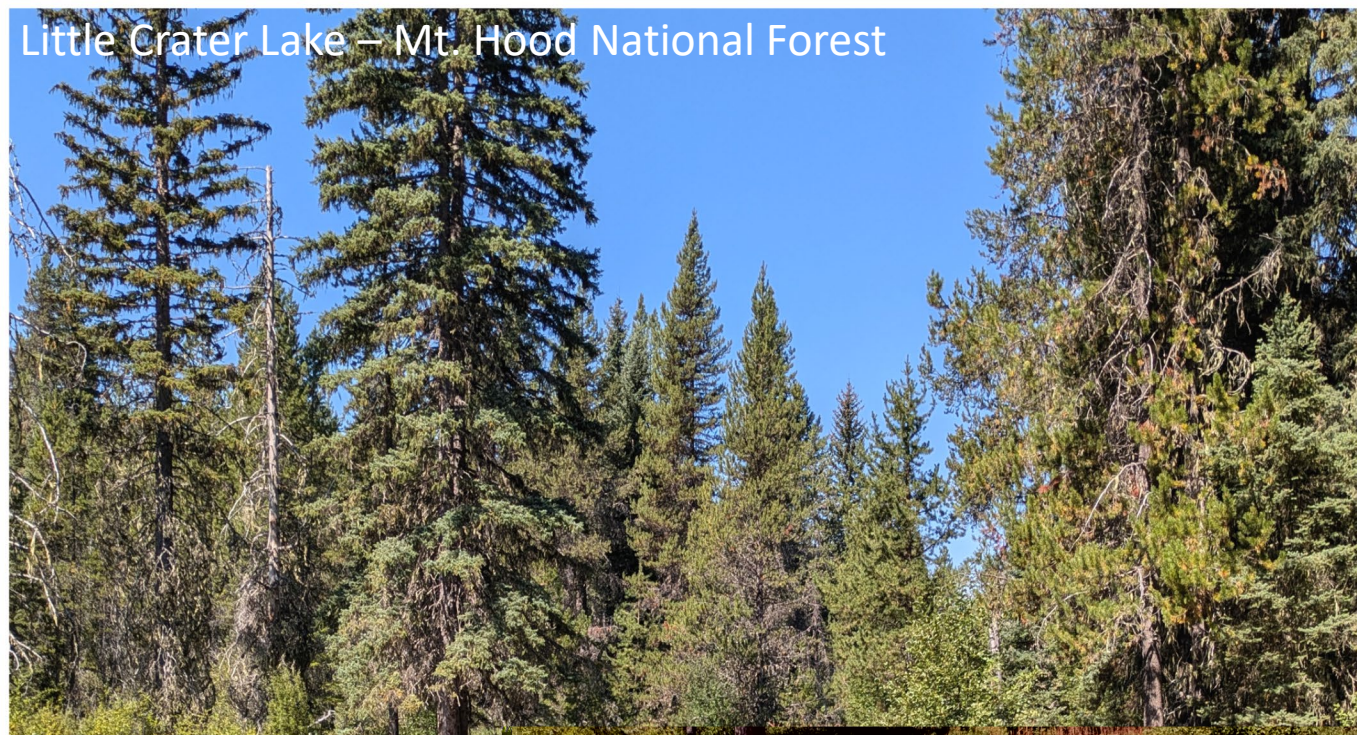
---

- **Additional responsibilities during solicitations:**

- Setting funding limits (program and project)
- Approving application package
- Approving selection criteria
- Selecting project's scope, budget and funding fiscal year for programming
- Delivery agency (begin with assumption of WFL delivery)

- **Responsibilities outside of solicitation:**

- Approves programmed project's scope changes
- Approves programmed project's budget changes
- Approves loan/borrows between States
- Determines applicability of match or project contributions
- May be requested to provide direction on priorities
- May be requested to help facilitate project issues
- Attend PDC Meetings



# PURPOSE OF THE TAG

---

Technical Advisory Group

# TAG MEMBERS

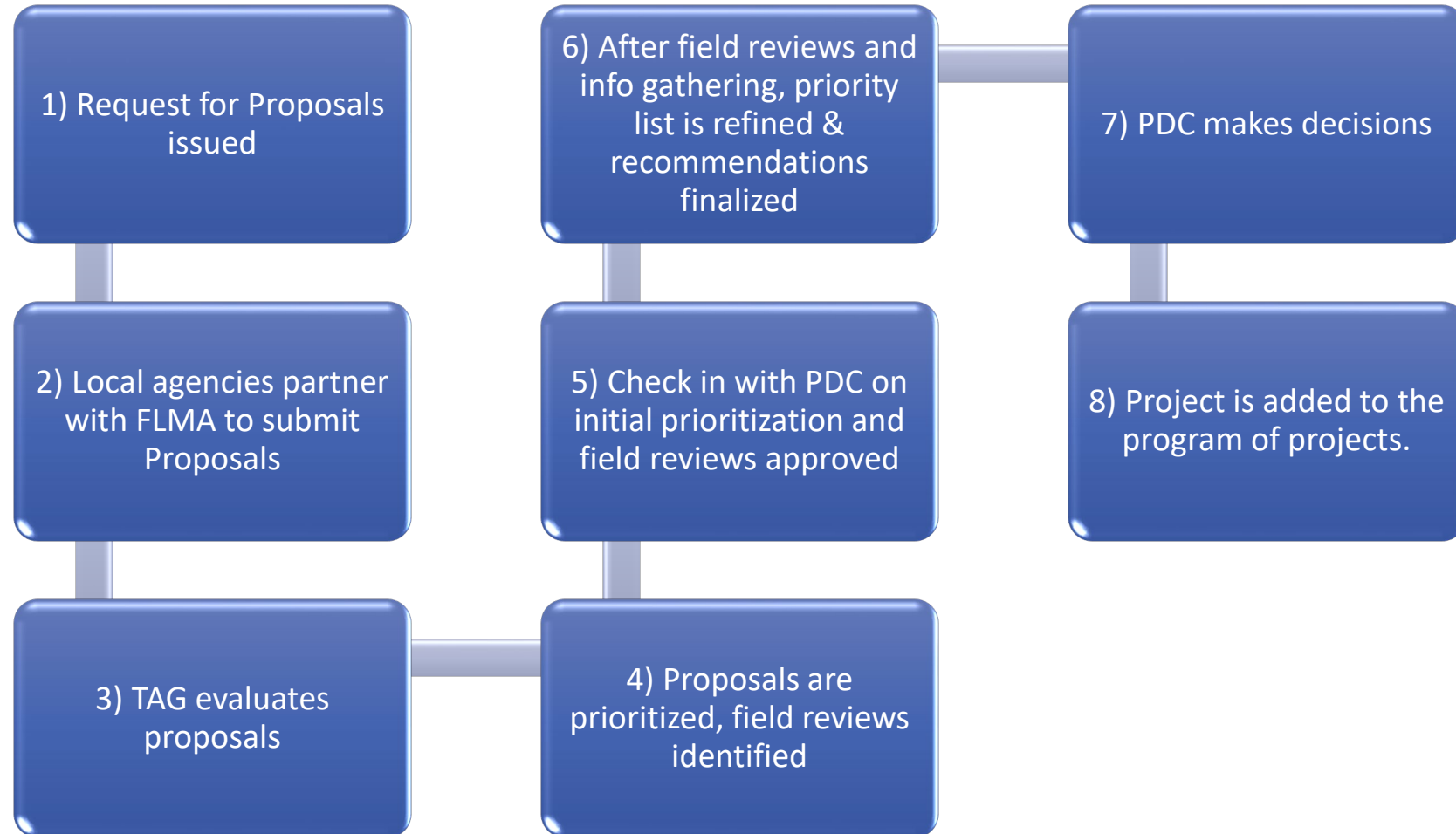
- National Park Service
  - Fish and Wildlife Service
  - Forest Service
  - Bureau of Land Management
  - Army Corps of Engineers
  - Dept of Defense
  - Association of Oregon Counties
  - Oregon Dept. of Transportation
  - FHWA - WFL
  - FHWA – Oregon Division
-

# TAG RESPONSIBILITIES

---

- **Additional responsibilities during solicitations:**
  - Review application packages prior to submittal
  - Review and rate applications
  - Provide agency priorities
  - Make recommendations to the PDC on project selections
- **Responsibilities outside of solicitation:**
  - May be requested to help facilitate project issues
  - Attend PDC meetings

# PROPOSAL SELECTION PROCESS



# PROPOSAL SELECTION PROCESS CONTINUED

---

- PDC will make final decisions while taking into account:
  - *Agency priorities*
  - *Applicant's share of the costs, previous Federal investment, and availability of funds*
  - *Project delivery schedules*
  - *Environmental and right-of-way constraints*
- Access Program is contingent on available funding and authorizing legislation.

# DELIVERY AGENCY

---

- WFL is responsible for stewardship and oversight to ensure compliance with Federal requirements.
- Begin with the assumption that WFL will deliver the project.
- PDC, in coordination with other agencies, makes the final decision on project delivery.

# INVESTMENT STRATEGY

---

- Maximize the benefits of limited funds by emphasizing:
  - Proposals that access high-use Federal recreation sites and Federal economic generators.
  - Proposals that preserve existing access to Federal Lands and restoring serviceability of the assets.
  - Proposals where important access will be lost without action.
  - In general, investment levels should be proportional to the % of use that is directly related to Federal Lands.
  - **NO MATCH REQUIREMENT!**

# 2026 OR FLAP REQUEST FOR PROPOSALS

---

- Oregon authorized for ~\$35 million annually
- For construction funds anticipated to be available in 2029, 2030, and 2031
- Types of projects include capital improvement, surface preservation, transit, and planning.
- Proposals must be submitted jointly by State, county, town, tribal, municipal or local government and the Federal Land Management Agency(ies) being accessed.

# TYPES OF PROJECTS

---

- **Capital Improvement**

- Rehabilitation, restoration, construction, and reconstruction of roads and bridges
  - Safety improvements, widening, realignments, surfacing, culverts, bridges, signing and associated road appurtenances.
  - Trail-related improvements such as interpretive signing, kiosks, viewpoints, and vehicular parking areas at trailheads.

- **Surface Preservation**

- For roads, trails and adjacent vehicular parking areas.
  - Chip seal, crack sealing and aggregate courses

# TYPES OF PROJECTS

---

- **Transit**
- **Planning**
  - Engineering studies, corridor management planning, and multimodal transportation planning
  - Provide valuable information for future FLAP proposals

# RFP TIMELINES

---

- **March 18, 2026** - Proposal packet issued
- **June 12, 2026** - Completed proposal to WFL
- TAG reviews proposals and provides initial recommendations to PDC by mid-August
- TAG field reviews projects in September
- PDC makes final programming decisions in late-2026/early-2027

# TIPS FOR DEVELOPING GOOD PROPOSALS

---

- Turn applications in on time... by submitting it early!
- Get all of the correct signatures
- Write to criteria:
  - High-use recreation and economic generation (HUR-EG) Access
  - Safety
  - Asset Improvement
  - Mobility
  - Readiness & Support

# TIPS (CON'T)

---

- Include map
- Show Federal lands accessed
- Show Federal high-use recreation sites and Federal economic generators  
(if applicable)
- Other Federal lands roads (FLTP network)
- Include photos
- Include supporting right-of-way documentation
- Include letters of support

# TIPS (CON'T)

---

- Mind the page limits (30 pages) and file size (10 megabytes)
- Make sure you have good project maps and clear photos
- Sometimes you must state the obvious – be clear about the intended work
- Be clear about who should deliver the project
- Be clear about any additional project contributions

# TIPS (CON'T)

---

- Size your request to a reasonable project - Oregon receives about \$35M annually for FLAP
- Work with FLMAs on:
  - User information
  - % Federal land related traffic
  - Mapping the Federal lands that the project accesses
  - Help edit proposals
- Coordinate with your representative on the TAG!



Little Crater Lake – Mt. Hood National Forest

# QUESTIONS?

---

Visit the Oregon FLAP Website to submit questions to the WFL Program Management Team!

<https://highways.dot.gov/federal-lands/flap/or>

Source: FHWA