



U.S. Department of Transportation
Federal Highway Administration
 Office of Federal Lands Highway



Mission: Improving transportation to and within federal and tribal lands by providing technical services to the highway transportation community.

This report only includes fiscal year (FY) **2013, FY 2014 and FY 2015**, for updated information please visit: <http://www.cflhd.gov/programs/flap/ut/index.cfm>

If you have any questions please contact:
Chris Longley, Access Program Manager
 720-963-3733, Christopher.Longley@dot.gov

Morgan Malley, Lead Planner
 720-963-3605, Morgan.Malley@dot.gov

Programming Decision Committee (PDC) members:

Ryan Tyler, FHWA Representative
Ryan.Tyler@dot.gov

Bill Lawrence, State Representative
BillLawrence@utah.gov

Claudia Jarrett, Local Representative
claudiaj@cut.net

Federal Lands Access Program (FLAP)

Improving access to and within federal and tribal lands

Utah

MAP-21 Funding Authorized:

FY 2013: \$10,777,427

FY 2014: \$10,858,387

FY 2015: \$10,640,694

Federal land acreage for the five core FLMAs: 61%

Federal public road miles: 3,302.7

Number of Federal public bridges: 158

Recreational visitation: 20,601,351 visitors per year

Highlighted Project: *Sevenmile Gooseberry—Phase 4*

Constructed: FY 2015

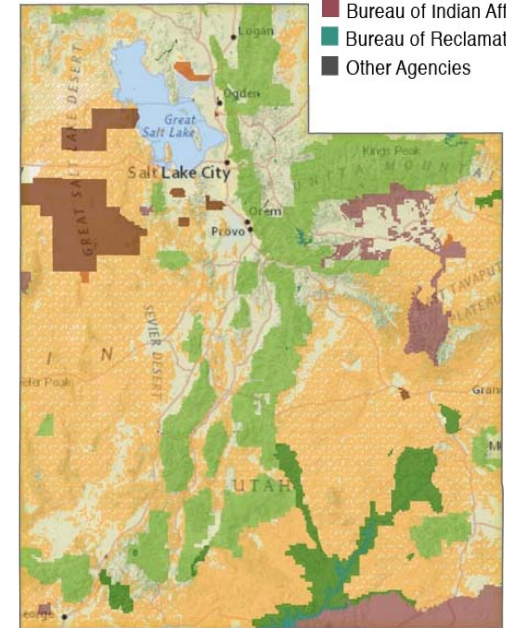
Success Story:

The Sevenmile-Gooseberry Road is located in central Utah and provides access to the Fishlake National Forest. The route is 28 miles that goes from I-70 south to the Fremont River Road near the Johnson Reservoir and Fish Lake. This route was added to the UT Forest Highway program in 1989 and previous work (18.6 miles) was awarded on various phases in 2002, 2005, 2008, and 2009. This project was the final 9.4 miles of this route that would connect I-70 and the Fremont River Road with an improved and paved roadway.

The projects along this route included the full reconstruction of the roadway to improve alignment, width, and safety, including realignment of the roadway, drainage and safety improvements, geotechnical and environmental mitigation, and paving.

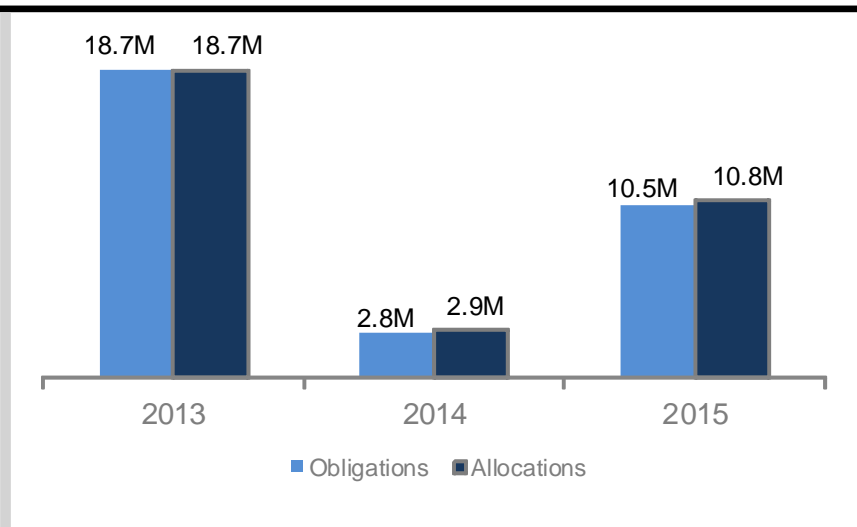
CFLHD worked in close partnership with Sevier County and the Fishlake NF to successfully deliver all phases. FLAP funds, along with matching funds from the county, were used to complete the final phase. This phase received the 2015 Associated General Contractor's of Utah Award of Excellence.

- Forest Service
- Department of Defense
- Bureau of Land Management
- Fish and Wildlife Service
- National Park Service
- Bureau of Indian Affairs
- Bureau of Reclamation
- Other Agencies



Sevenmile Gooseberry Road

FLAP Project Selection Process		
Call for Projects	Number of Applications Received	Total Access Program Funds Requested
March 15, 2013 - May 15, 2013	32	\$167,755,692



FLAP Program of Projects*						
Project Name	Improvement Type	FLMA Accessed	Federal Land's Unit	Delivery Year	Delivery Agency	Owner Agency
Sevenmile-Gooseberry	4R Maintenance-Restoration & Rehabilitation	FS	FS - Fishlake National Forest	2013	CFLHD, FHWA	Sevier County
Little Sahara Sand Dunes Road	Reconstruction- No Added Capacity	BLM	BLM - Fillmore Field Office	2014	CFLHD, FHWA	Juab County
Bryce Canyon Bicycle/ Pedestrian Pathway	Facilities for Pedestrians & Bicycles	NPS	NPS - Bryce Canyon / FS - Dixie National Forest	2015	CFLHD, FHWA	Bryce Canyon City
Navajo Lake Road	Reconstruction- No Added Capacity	FS	FS - Dixie National Forest	2016	CFLHD, FHWA	Kane County
Cascade Springs Road	4R Maintenance-Restoration & Rehabilitation	FS	FS - Uintah National Forest	2018	CFLHD, FHWA	Wasatch County
La Sal Mountain Loop Road	4R Maintenance-Restoration & Rehabilitation	FS	FS - Manti-LaSal National Forest	2017	CFLHD, FHWA	Grand County
State Route 149	4R Maintenance-Restoration & Rehabilitation	NPS	NPS - Dinosaur National Monument	2018	CFLHD, FHWA	UDOT

*This information is an overview of the FLAP projects information. It is subject to change at any time. For additional details or clarifications, please contact the Federal Lands Highway Division offices or visit the State FLAP webpage.