



U.S. Department of Transportation  
**Federal Highway Administration**  
 Office of Federal Lands Highway



Mission: Improving transportation to and within federal and tribal lands by providing technical services to the highway transportation community.

This report only includes fiscal year (FY) **2013, FY 2014, and FY 2015**. For updated information please visit:

<http://www.wfl.fhwa.dot.gov/programs/flap/or/>

If you have any questions please contact:  
**George Fekaris**, Transportation Planner,  
 (360) 619-7766, [George.Fekaris@dot.gov](mailto:George.Fekaris@dot.gov)

Programming Decision Committee (PDC) members:

Pete Field, FHWA Representative  
[Peter.Field@dot.gov](mailto:Peter.Field@dot.gov)

Bob Bryant, State Representative  
[robert.w.bryant@odot.state.or.us](mailto:robert.w.bryant@odot.state.or.us)

Emily Ackland, Local Representative  
[eackland@ocweb.org](mailto:eackland@ocweb.org)

## Federal Lands Access Program (FLAP)

Improving access to and within federal and tribal lands

# Oregon

MAP-21 Funding Authorized:

FY 2013: \$22,078,490

FY 2014: \$22,244,345

FY 2015: \$21,798,381

Federal land acreage for five core FLMA's: 52%

Federal public road miles: 19,364.4

Number of Federal public bridges: 1,138

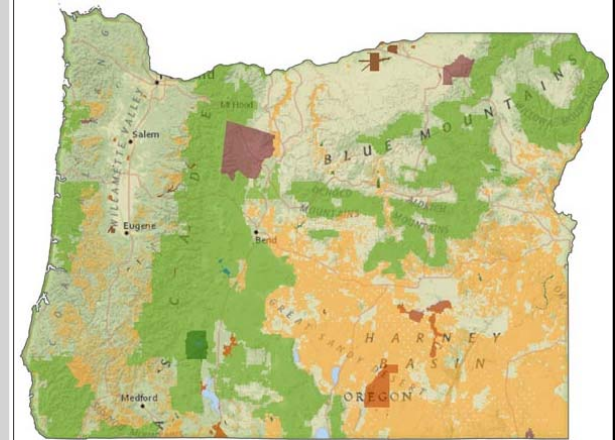
Recreational visitation: 28,072,700 visitors per year

### Success story: Tiller Trail Highway

The Tiller Trail Highway provides access to 360,000 acres of the Umpqua National Forest and the Tiller Ranger District. Visitors use the road to reach Crater Lake National Park, South Umpqua Falls, and Lost Creek Reservoir. The highway provides access to several sites used by the Cow Creek Band of the Umpqua Tribe and to recreational activities such as camping, hiking, boating, hunting, and fishing.

The portion of the highway owned and maintained by Douglas County has experienced severe differential settlement over the past few years, causing rough road conditions and requiring extensive annual maintenance. Currently under construction, this project is rehabilitating approximately 1,100 feet of pavement and stabilizing the road bed; correcting poor vertical alignment; and improving drainage.

The Oregon PDC looks for projects where the investment level of FLAP funding is proportional to the percentage of traffic directly related to federal lands. The PDC chooses projects that preserve existing Federal lands access and restore the serviceability of the assets; and prevent the loss of important access that can happen through such events as bridge closures or landslides. The program places less emphasis on new facilities, focusing instead on maintaining capacity or enhancements to existing facilities. This project meets the PDC goal to preserve access to high use Federal recreation sites and economic generators.

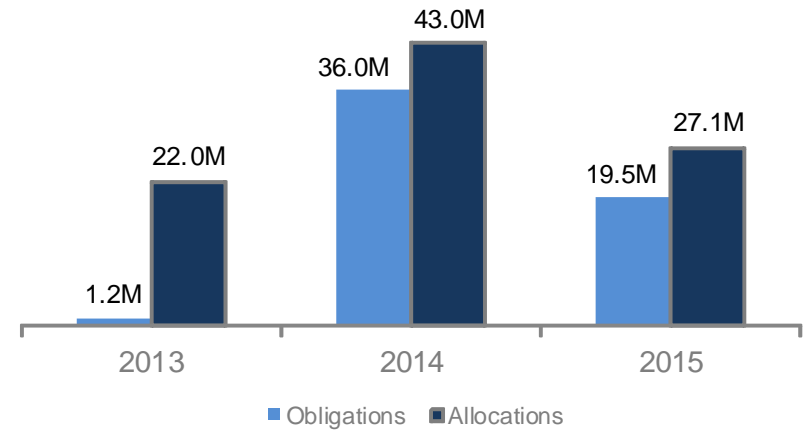


Tiller Trail Highway, Douglas County, Oregon

### FLAP Project Selection Process

PDC approves WFL to issue a request for proposals (RFP) for certain types of projects, WFL conducts informational webinar, proposals for projects are submitted to WFL, eligible project proposals are ranked by Technical Advisory Group (TAG) made up of FLMAs and WFL staff, TAG makes preliminary recommendations to PDC, TAG performs field reviews for some projects, TAG collects additional data and makes final recommendations to PDC, PDC makes final programming decision on project proposals and awards FLAP funds to projects.

The Oregon PDC issued an RFP in 2013 for capital, enhancement, transit, planning and research projects; an RFP in 2014 for surface preservation projects; and an RFP in 2015 for capital, enhancement, transit, and planning projects. Project selection factors include: high use federal recreation sites, economic generators, safety, environmental quality, readiness, preservation of existing access and serviceability. The total FLAP funds requested from the 2013, 2014 and 2015 RFPs was \$234,770,723.



### FLAP Program of Projects\*

Project Name	Improvement Type	FLMA Accessed	Federal Land's Unit	Delivery Year	Delivery Agency	Owner Agency
Mt. Hood City of Sandy Transit Service Expansion	Operation and maintenance of transit facilities	FS / BLM	FS - Mt Hood Forest / BLM - Prineville District	2013	City of Sandy	Clackamas County / City of Sandy
Mt. Hood Mountain Express Transit Service Expansion	Operation and maintenance of transit facilities	FS / BLM	FS - Mt Hood Forest / BLM - Prineville District	2013	Clackamas County	Clackamas County
Columbia River Trail / Starvation Creek to Hole in the Wall Falls	Facilities for Pedestrians & Bicycles	FS	FS - Mt Hood National Forest	2014	Western Federal Lands Highway Division, FHWA	Oregon DOT
George Millican Road Improvements	4R Maintenance-Restoration & Rehabilitation	BLM	BLM - Prineville District	2014	Crook County	Crook County
Highway 140, Ritter Road	4R Maintenance-Restoration & Rehabilitation	FS	FS - Umatilla National Forest	2014	Oregon Department of Transportation	Oregon DOT
Oregon Caves Highway Enhancement Project	Vehicular parking areas	FS	FS - Siskiyou National Forest	2014	Rogue River-Siskiyou National Forest	Oregon DOT

***FLAP Program of Projects\****

<b>Project Name</b>	<b>Improvement Type</b>	<b>FLMA</b>	<b>Federal Land's Unit</b>	<b>Delivery Year</b>	<b>Delivery Agency</b>	<b>Owner Agency</b>
Rogue Umpqua Byway Enhancements - BLM	Vehicular parking areas	BLM	BLM - Medford & Roseburg Districts	2014	Rogue River-Siskiyou National Forest	Oregon DOT
Rogue Umpqua Byway Enhancements - ODOT	Vehicular parking areas	NPS / USACE	NPS - Crater Lake / USACE - Rogue River Basin	2014	Rogue River-Siskiyou National Forest	Oregon DOT
Rogue Umpqua Byway Enhancements - USFS	Vehicular parking areas	FS	FS - Umpqua & Rogue-Siskiyou National Forests	2014	Rogue River-Siskiyou National Forest	Oregon DOT
Row River Road Trail Crossings	Facilities for Pedestrians & Bicycles	BLM / USACE	BLM - Eugene / USACE - Willamette Valley / FS - Umpqua	2014	Lane County	Lane County
Salmon River Estuary Restoration & Public Education Facility	Vehicular parking areas	FS	FS - Siuslaw National Forest	2014	Siuslaw National Forest	Oregon DOT
Schindler Landing Enhancement	Vehicular parking areas	FS	FS - Siuslaw National Forest / BLM - Eugene District	2014	Lane County	Lane County
Skyliners Road Improvements	4R Maintenance-Restoration & Rehabilitation	FS	FS - Deschutes National Forest	2014	Western Federal Lands Highway Division, FHWA	Deschutes County
Skyliners Road Trailhead Enhancements	Facilities for Pedestrians & Bicycles	FS	FS - Deschutes National Forest	2014	Western Federal Lands Highway Division, FHWA	Deschutes County
Tiller Trail Highway	4R Maintenance-Restoration & Rehabilitation	FS	FS - Umpqua National Forest	2014	Western Federal Lands Highway Division, FHWA	Jackson County
Cascadia Site Development & Santiam Wagon Road Interpretation	Vehicular parking areas	FS	FS - Willamette National Forest	2015	Willamette National Forest	Linn County

***FLAP Program of Projects\****

<b>Project Name</b>	<b>Improvement Type</b>	<b>FLMA</b>	<b>Federal Land's Unit</b>	<b>Delivery Year</b>	<b>Delivery Agency</b>	<b>Owner Agency</b>
Celilo Park Safe Access, Rest Area, Recreation Improvements	Vehicular parking areas	USACE	USACE - The Dallas Lock & Dam Project	2015	Western Federal Lands Highway Division, FHWA	Oregon DOT
Cody Road - Wamic Market Grade Reconstruction	4R Maintenance-Restoration & Rehabilitation	FS	FS - Mt Hood National Forest	2015	Western Federal Lands Highway Division, FHWA	Wasco County
Dog Lake Lane Rehabilitation	4R Maintenance-Restoration & Rehabilitation	FS	FS - Fremont National Forest / BLM - Lakeview District	2015	Lake County	Lake County
Fall Creek Bridge Replacement	Bridge Replacement	FS	FS - Deschutes National Forest	2015	Western Federal Lands Highway Division, FHWA	Deschutes County
Granite Hill Highway Reconstruction	4R Maintenance-Restoration & Rehabilitation	FS	FS - Wallowa-Whitman & Umatilla National Forests	2015	Western Federal Lands Highway Division, FHWA	Baker County
Safe Ingress/Egress from SR99W	4R Maintenance-Restoration & Rehabilitation	FWS	FWS - Tualatin River National Wildlife Refuge	2015	Western Federal Lands Highway Division, FHWA	Oregon DOT
Tiller Trail Highway Reconstruction MP 40.20 - MP 40.41	4R Maintenance-Restoration & Rehabilitation	FS / NPS	FS - Umpqua Forest / NPS - Crater Lake National Park	2015	Western Federal Lands Highway Division, FHWA	Douglas County
Trout Creek Campground Pavement Connection	4R Maintenance-Restoration & Rehabilitation	BLM	BLM - Prineville District	2015	Western Federal Lands Highway Division, FHWA	Jefferson County
US 101: Sea Lion Point Rockwall Restoration/ Replacement	4R Maintenance-Restoration & Rehabilitation	FS	FS - Siuslaw National Forest	2015	Oregon Department of Transportation	Oregon DOT
Multnomah Falls Viaducts Repairs	4R Maintenance-Restoration & Rehabilitation	FS	FS - Mt Hood Forest (Columbia River Gorge)	2016	Western Federal Lands Highway Division, FHWA	Oregon DOT

***FLAP Program of Projects\****

<b>Project Name</b>	<b>Improvement Type</b>	<b>FLMA Accessed</b>	<b>Federal Land's Unit</b>	<b>Delivery Year</b>	<b>Delivery Agency</b>	<b>Owner Agency</b>
Palmer Junction - MP 0.0 to 15.1	4R Maintenance-Restoration & Rehabilitation	FS	FS - Umatilla National Forest	2016	Western Federal Lands Highway Division, FHWA	Union County
Powers Highway - Burma Slide & Curve Realignment	4R Maintenance-Restoration & Rehabilitation	FS	FS - Rogue River & Siskiyou National Forests	2016	Oregon Department of Transportation	Oregon DOT
Quartzville Road Improvements	4R Maintenance-Restoration & Rehabilitation	BLM / USACE / FS	BLM - Salem / USACE - Willamette Valley / FS - Willamette	2016	Linn County	Linn County
Mirror Lake Trailhead Relocation	4R Maintenance-Restoration & Rehabilitation	FS	FS - Mt Hood National Forest	2017	Western Federal Lands Highway Division, FHWA	Oregon DOT
Cascade Lakes Highway Chip Seal	Preventive Maintenance / Surface preservation	FS	Deschutes NF	2015	Deschutes County	Deschutes County
CR 3-12 Preservation Chip Seal	Preventive Maintenance / Surface preservation	FWS, BLM	FWS - Hart Mountain National Antelope Range/Wildlife Refuge, BLM	2015	Lake County	Lake County
Galice Road Pavement Preservation Project	Preventive Maintenance / Surface preservation	FS, BLM	FS - Rogue River Siskiyou National Forest; BLM - Medford Office	2015	Josephine County	Josephine County
Middle Fork Road Chip Seal Project	Preventive Maintenance / Surface preservation	FS, BLM	Malheur National Forest, Umatilla NF, Wallowa-Whitman NF, BLM	2015	Grant County	Grant County
Lost Lake Road Chip Seal	Preventive Maintenance / Surface preservation	FS	FS - Mt Hood National Forest	2015	Hood River County	Hood River County

***FLAP Program of Projects\****

<b>Project Name</b>	<b>Improvement Type</b>	<b>FLMA Accessed</b>	<b>Federal Land's Unit</b>	<b>Delivery Year</b>	<b>Delivery Agency</b>	<b>Owner Agency</b>
Anthony Lakes Highway	Preventive Maintenance / Surface preservation	FS	FS - Wallowa-Whitman NF, Malhuer NF	2015	Baker County	Baker County
Wyeth Road Double Chip Seal	Preventive Maintenance / Surface preservation	FS	Columbia Gorge National Scenic Area	2015	Hood River County	Hood River County
Forest Road 1419/SW Camp Sherman Road	Preventive Maintenance / Surface preservation	FS	Deschutes NF	2015	Jefferson County	Deschutes NF
CR 3-12 Preservation Overlay	Preventive Maintenance / Surface preservation	FS, BLM	Hart Mountain National Antelope Range/ Wildlife Refuge, BLM	2015	Lake County	Lake County
John Day Fossil Beds National Monument Painted Hills Unit Access Improvement	Preventive Maintenance / Surface preservation	BLM	John Day Fossil Beds NM, BLM	2015	Western Federal Lands Highway Division, FHWA	Wheeler County, NPS
OR 429: Willamette Hwy to Lava Odell Rd	Preventive Maintenance / Surface preservation	FS	FS - Deschutes NF	2015	Oregon DOT	Oregon DOT
OR 171: MP 44.94-45.82 Pavement Restoration	Preventive Maintenance / Surface preservation	FS	FS - Mt Hood NF	2015	Western Federal Lands Highway Division, FHWA	USFS, ODOT
E Salmon River Road Preventative Maintenance	Preventive Maintenance / Surface preservation	FS	FS - Mt Hood NF	2015	Clackamas County	Clackamas County
Rail Hollow Overlay	Preventive Maintenance / Surface preservation	FS	FS - Mt Hood NF	2015	Western Federal Lands Highway Division, FHWA	Wasco County

***FLAP Program of Projects\****

<b>Project Name</b>	<b>Improvement Type</b>	<b>FLMA Accessed</b>	<b>Federal Land's Unit</b>	<b>Delivery Year</b>	<b>Delivery Agency</b>	<b>Owner Agency</b>
Sunflower Flat Road	Preventive Maintenance / Surface preservation	FS	FS - Umatilla NF	2015	Morrow County	Morrow County
Cape Meares Road Relocation	4R Maintenance-Restoration & Rehabilitation	FWS	Cape Meares NWR	2020	Western Federal Lands Highway Division, FHWA	Tillamook County
Cascade East Transit Winter Shuttle	Operation and maintenance of transit facilities	USFS	Deschutes NF	2018	Central Oregon Intergovernmental Council	COIC
Detroit Area Visitor Portal, Bikeway and Day Use Enhancements	4R Maintenance-Restoration & Rehabilitation	USFS	Willamette NF, Mt Hood NF, Deschutes NF, USACE Detroit Res	2018	Western Federal Lands Highway Division, FHWA	City of Detroit
East Bay Road Rehabilitation	4R Maintenance-Restoration & Rehabilitation	USFS	Fremont-Winema NF	2018	Western Federal Lands Highway Division, FHWA	Lake County
East Birch Creek Road Resurfacing	3R Maintenance-Resurfacing	USFS	Umatilla NF, Wallowa-Whitman NF	2017	Umatilla County	Umatilla County
Fish Lake Road	3R Maintenance-Resurfacing	USFS	Wallowa-Whitman NF	2017	Baker County	Baker County
Foster Dam Road Public Access Improvement Project	4R Maintenance-Restoration & Rehabilitation	Corp	USACE Foster Dam & Green Peter Reservoir, BLM, Willamette NF	2018	Linn County	Linn County
Hagg Lake Perimeter Road	4R Maintenance-Restoration & Rehabilitation	BOR	BOR, Henry Hagg Lake	2017	Western Federal Lands Highway Division, FHWA	Washington County

***FLAP Program of Projects\****

<b>Project Name</b>	<b>Improvement Type</b>	<b>FLMA Accessed</b>	<b>Federal Land's Unit</b>	<b>Delivery Year</b>	<b>Delivery Agency</b>	<b>Owner Agency</b>
High Prairie Road Chip Seal	3R Maintenance-Resurfacing	USFS	Willamette NF	2017	Lane County	Lane County
Highway 35 Safety Improvements at Meadows Creek & Mt Hood Meadows Ski Area	4R Maintenance-Restoration & Rehabilitation	USFS	Mt Hood NF	2018	Western Federal Lands Highway Division, FHWA	ODOT
Historic Columbia River Highway Congestion Management	Operation and maintenance of transit facilities	USFS	Columbia River Gorge NSA, Bonneville Dam USACE	2016	Oregon Department of Transportation	ODOT
Historic Columbia River Highway Summit Creek Viaduct	4R Maintenance-Restoration & Rehabilitation	USFS	Columbia River Gorge NSA	2016	Western Federal Lands Highway Division, FHWA	ODOT
Juntura Cutoff Road	4R Maintenance-Restoration & Rehabilitation	BLM	Malhuer NF, BLM	2019	Oregon Department of Transportation	Harney County
Keeney Fork Road Chipseal	3R Maintenance-Resurfacing	USFS	Malhuer NF	2018	Grant County	Grant County
Kitson Springs Slide Repair at MP 2.6	4R Maintenance-Restoration & Rehabilitation	USFS	Willamette NF	2016	Lane County	Lane County
Little River Road Rock Slope Stabilization MP 24.6	4R Maintenance-Restoration & Rehabilitation	USFS	Umpqua NF	2019	Western Federal Lands Highway Division, FHWA	Douglas County



***FLAP Program of Projects\****

<b>Project Name</b>	<b>Improvement Type</b>	<b>FLMA Accessed</b>	<b>Federal Land's Unit</b>	<b>Delivery Year</b>	<b>Delivery Agency</b>	<b>Owner Agency</b>
North Fork Road Slide Stabilization	4R Maintenance-Restoration & Rehabilitation	USFS	Willamette National Forest,	2018	Western Federal Lands Highway Division, FHWA	Marion County
OR 140 - Klamath County Boat Marina to Lakeshore Drive	4R Maintenance-Restoration & Rehabilitation	USFS	Freemont Winema NF	2018	Western Federal Lands Highway Division, FHWA	ODOT
OR 224 Pavement Restoration MP 31.8 to 32.8	3R Maintenance-Resurfacing	USFS	Mt Hood NF	2018	Western Federal Lands Highway Division, FHWA	ODOT
OR 36 - Florence-Eugene Highway to Greenleaf Creek	3R Maintenance-Resurfacing	USFS	BLM and Siuslaw National Forest	2017	Western Federal Lands Highway Division, FHWA	ODOT
Owyhee Lake Road Overstreet Road - Owyhee Reservoir	4R Maintenance-Restoration & Rehabilitation	BLM	Owyhee Lake, BLM, BOR	2016	Western Federal Lands Highway Division, FHWA	Malheur County
Paulina Lake Road Chip Seal	3R Maintenance-Resurfacing	USFS	Deschutes NF	2017	Deschutes County	Deschutes County
Rowe Creek Pavement Preservation	3R Maintenance-Resurfacing	NPS	Sutton Mtn Wilderness Area, NPS	2017	Western Federal Lands Highway Division, FHWA	Wheeler County
Sharing the Roads to Federal Lands	Operation and maintenance of transit facilities	USFS	Mt Hood NF, Willamette NF, Wallowa-Whitman NF	2016	Western Federal Lands Highway Division, FHWA	ODOT
Silvies-Hopper Lane Reconstruction and Overlay Project	4R Maintenance-Restoration & Rehabilitation	USFS	Malheur NF, BLM	2018	Western Federal Lands Highway Division, FHWA	Grant County

***FLAP Program of Projects\****

<b>Project Name</b>	<b>Improvement Type</b>	<b>FLMA Accessed</b>	<b>Federal Land's Unit</b>	<b>Delivery Year</b>	<b>Delivery Agency</b>	<b>Owner Agency</b>
Sitkum Lane Double OTTA Seal, Safety Features	3R Maintenance-Resurfacing	BLM	Umpqua BLM	2018	Coos County	Coos County
South Century Drive Chip Seal	3R Maintenance-Resurfacing	USFS	Deschutes NF	2017	Deschutes County	Deschutes County
Tiller-Trail Highway Chip Seal, Jackson County Line to Highway 62	3R Maintenance-Resurfacing	USFS	Umpqua NF, BLM	2017	Jackson County	Jackson County
Tygh Valley - Wamic Road Improvements	4R Maintenance-Restoration & Rehabilitation	USFS	Mt Hood NF	2017	Western Federal Lands Highway Division, FHWA	Wasco County
US 20 Lower Sunken Grade Slide Repair MP 55.4	4R Maintenance-Restoration & Rehabilitation	USFS	Willamette NF	2018	Western Federal Lands Highway Division, FHWA	ODOT
Wallowa Mountain Loop Road Reconstruction	4R Maintenance-Restoration & Rehabilitation	USFS	Wallowa-Whitman NF	2018	Western Federal Lands Highway Division, FHWA	Wallowa County
Zumwalt Road Surface Preservation	3R Maintenance-Resurfacing	USFS	Wallowa-Whitman NF	2017	Western Federal Lands Highway Division, FHWA	Wallowa County

\* This information is an overview of the FLAP projects information. It is subject to change at any time. For additional details or clarifications, please contact the Federal Lands Highway Division offices or visit the State FLAP webpage.