



U.S. Department of Transportation
Federal Highway Administration
 Office of Federal Lands Highway



Mission: Improving transportation to and within federal and tribal lands by providing technical services to the highway transportation community.

This report only includes fiscal year (FY) 2013, FY 2014 and FY 2015, for updated information please visit:

<http://www.efl.fhwa.dot.gov/programs/fed-lands-newyork.aspx>

If you have any questions please contact:

Jacinda Russell, Access Program Manager
 571-434-1543, Jacinda.Russell@dot.gov

Programming Decision Committee (PDC) members:

Jacinda Russell, Access Program Manager,
Jacinda.Russell@dot.gov

Diane Kenneally, State Representative
Diane.Kenneally@dot.ny.gov

Mark Debold, Local Representative
mdebald@dutchessny.gov

Federal Lands Access Program (FLAP)

Improving access to and within federal and tribal lands

New York

MAP-21 Funding Authorized:

FY 2013: \$446,893

FY 2014: \$450,250

FY 2015: \$441,224

Federal land acreage for the five core FLMAs: 0.37%

Federal public road miles: 63.8

Number of Federal public bridges: 8

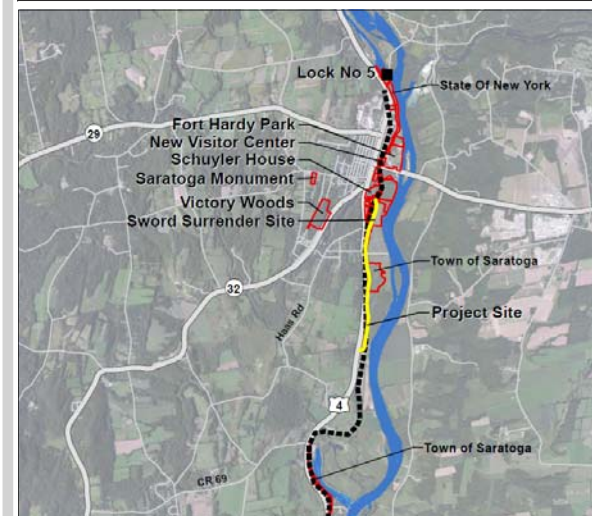
Recreational visitation: 18,324,086 visitors per year

Success Story: The Saratoga National Historical Park Trail Connector project will design and construct a 1.5 mile section of multi-use trail along the historic Old Champlain Canal connecting the National Park Service's Old Saratoga Unit to the Battlefield Unit of the Saratoga National Historical Park. The trail design will consist of a 10-foot stone dust trail with 2-foot shoulders on each side. Clearing, grubbing, and installing culverts may be necessary in some areas.

The proposed segment will be an integral part of the continuous Champlain Canalway Trail (CCT) which will link Waterford and Whitehall and serve to provide a safe, recreational area that will highlight and preserve a historically significant transportation corridor, the Old Champlain Canal. The CCT is a 71 mile long trail with a linear corridor adjacent to the Hudson River. This project will immediately be a major economic influence that will help to build tourism by connecting visitors to irreplaceable historic, cultural and natural resources within the region.



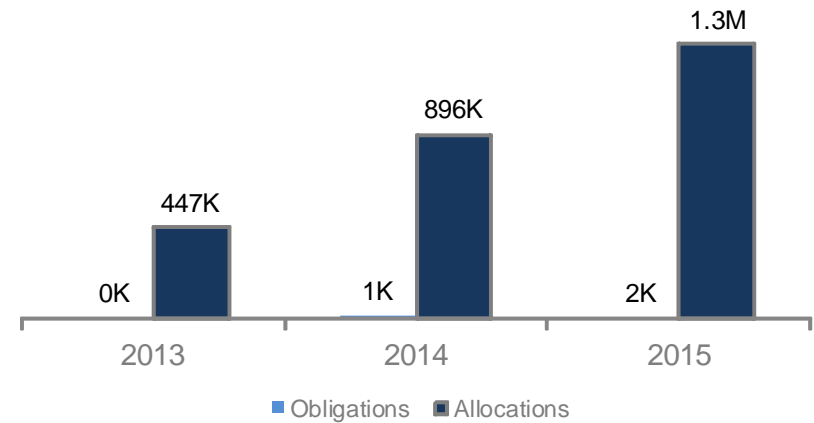
- Forest Service
- Department of Defense
- Bureau of Land Management
- Fish and Wildlife Service
- National Park Service
- Bureau of Indian Affairs
- Bureau of Reclamation
- Other Agencies



Proposed Trail Location Map

FLAP Project Selection Process

Each FLAP project was selected from a pool of applications submitted by the facility owner in response to a state-wide call for projects. The applications were screened, rated, and ranked using PDC approved rating criteria. The PDC unanimously agreed which projects met the established State program goals and conformed with the project ranking criteria contained in the “Call for Projects SOP”. Based upon these evaluations, the proposed projects were recommended for programming within the available funding for each state. Memorandum of Agreements (MOA) were coordinated and executed for each programmed project prior to obligation of FLAP funds. There was one call for projects, from September 19, 2013 until December 16, 2013, that generated 3 applications totaling \$952,000 funds requested.



FLAP Program of Projects*

Project Name	Improvement Type	FLMA Accessed	Federal Land's Unit	Delivery Year	Delivery Agency	Owner Agency
Canarsie Pier Active Transportation Connector	Facilities for Pedestrians & Bicycles	NPS	Gateway National Recreation Area	TBD	TBD- Requested Local Delivery	NYCDOT
Saratoga National Historical Park Trail Connector	Facilities for Pedestrians & Bicycles	NPS	Saratoga National Historical Park	TBD	TBD- Requested State DOT	Town of Saratoga

*This information is an overview of the FLAP projects information. It is subject to change at any time. For additional details or clarifications, please contact the Federal Lands Highway Division offices or visit the State FLAP webpage.