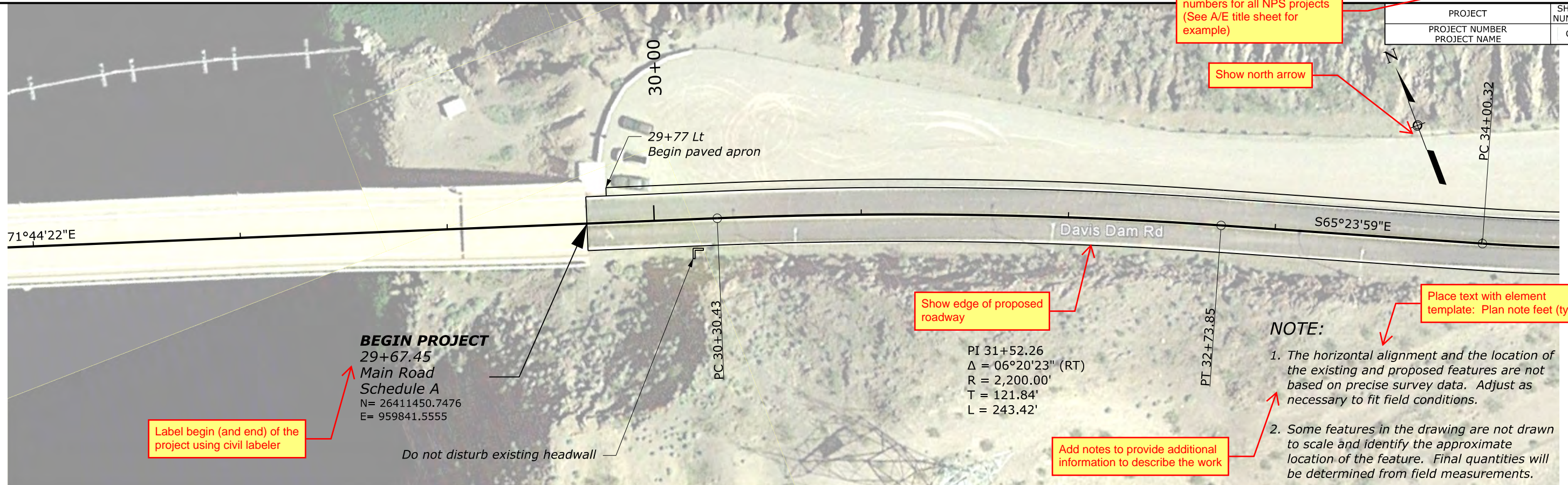


PROJECT	SHEET NUMBER
PROJECT NUMBER	C1
PROJECT NAME	

Show NPS PMIS and drawing numbers for all NPS projects (See A/E title sheet for example)

Show north arrow



71°44'22\"E

Davis Dam Rd

S65°23'59\"E

BEGIN PROJECT
29+67.45
Main Road
Schedule A
N= 26411450.7476
E= 959841.5555

Label begin (and end) of the project using civil labeler

Do not disturb existing headwall

Show edge of proposed roadway

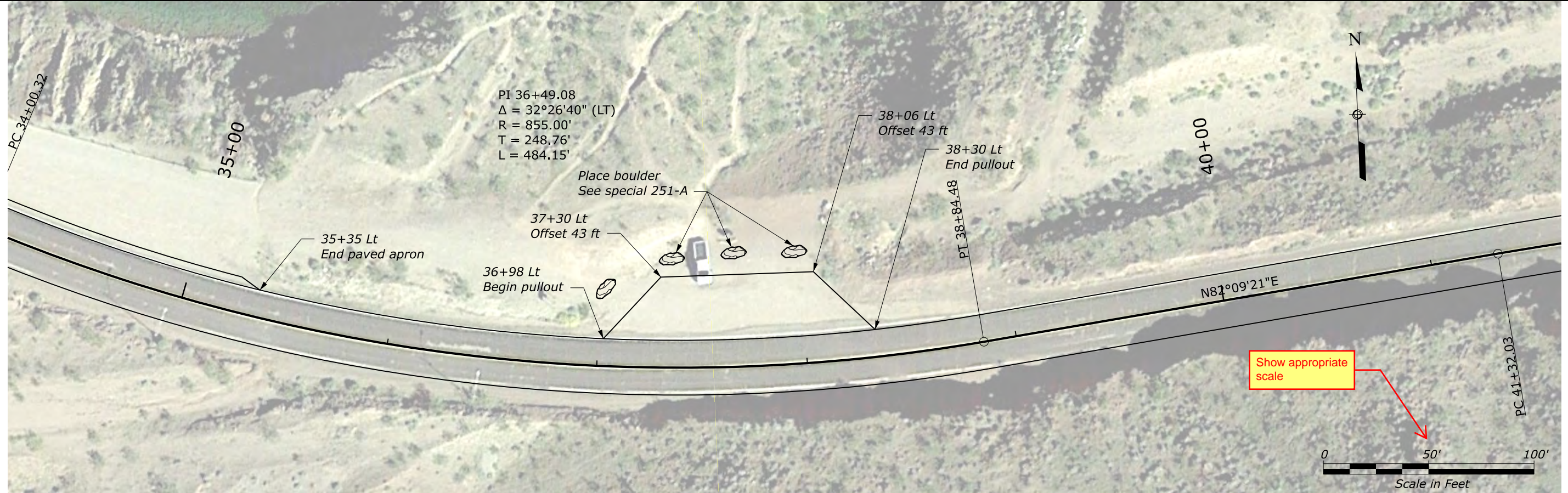
PI 31+52.26
 $\Delta = 06^\circ20'23''$ (RT)
R = 2,200.00'
T = 121.84'
L = 243.42'

Place text with element template: Plan note feet (typ.)

NOTE:

1. The horizontal alignment and the location of the existing and proposed features are not based on precise survey data. Adjust as necessary to fit field conditions.
2. Some features in the drawing are not drawn to scale and identify the approximate location of the feature. Final quantities will be determined from field measurements.

Add notes to provide additional information to describe the work



PI 36+49.08
 $\Delta = 32^\circ26'40''$ (LT)
R = 855.00'
T = 248.76'
L = 484.15'

Place boulder
See special 251-A

35+35 Lt
End paved apron

37+30 Lt
Offset 43 ft

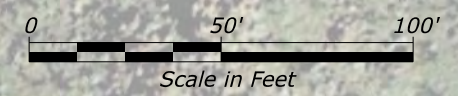
36+98 Lt
Begin pullout

38+06 Lt
Offset 43 ft

38+30 Lt
End pullout

N87°09'21\"E

Show appropriate scale



C:\CADD\Sample Plans\C Sheets\PLA(Sample).dgn [BL - Plan 1 (Sheet)] 2 April 2024 3:02 PM

Refer to CFL policy on Sealing and Signing of A/E Documents (located on the FLH website):
<https://highways.dot.gov/sites/fhwa.dot.gov/files/docs/federal-lands/pm/30091/sealing-signing-policy.pdf>

DAVIS DAM ROAD
29+67.45 to 41+00