

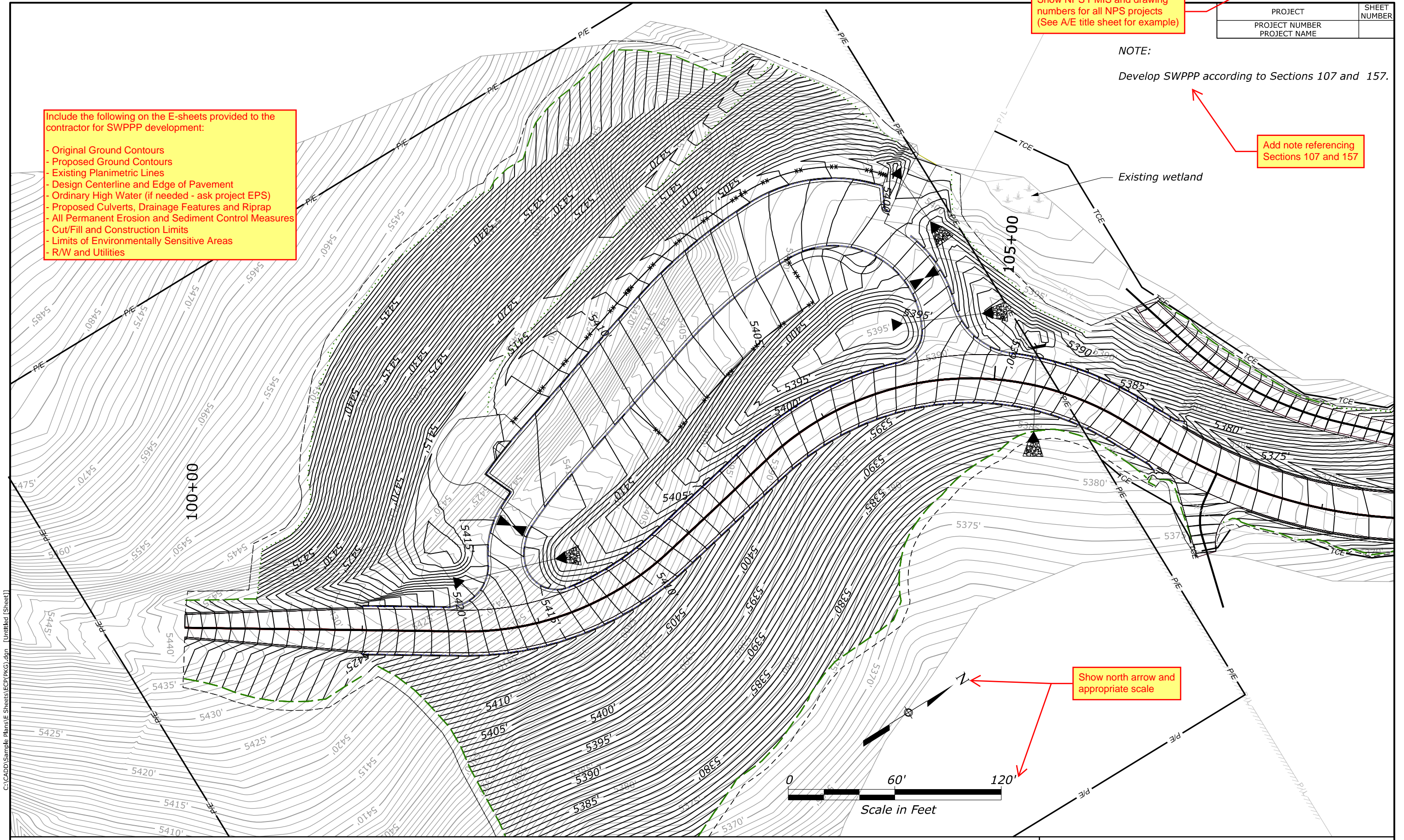
PROJECT	SHEET NUMBER
PROJECT NUMBER	
PROJECT NAME	

Show NPS PMIS and drawing numbers for all NPS projects (See A/E title sheet for example)

NOTE:
Develop SWPPP according to Sections 107 and 157.

Add note referencing Sections 107 and 157

- Include the following on the E-sheets provided to the contractor for SWPPP development:
- Original Ground Contours
 - Proposed Ground Contours
 - Existing Planimetric Lines
 - Design Centerline and Edge of Pavement
 - Ordinary High Water (if needed - ask project EPS)
 - Proposed Culverts, Drainage Features and Riprap
 - All Permanent Erosion and Sediment Control Measures
 - Cut/Fill and Construction Limits
 - Limits of Environmentally Sensitive Areas
 - R/W and Utilities



Show north arrow and appropriate scale

Refer to CFL policy on Sealing and Signing of A/E Documents (located on the FLH website):
<https://highways.dot.gov/sites/fhwa.dot.gov/files/docs/federal-lands/pm/30091/sealing-signing-policy.pdf>

PARKING LOT SWPPP