

Notes to the Designer

Updated October 2023

Wheelstop

General Information

- All graphics and text will be in the design and drawing models. Only use the sheet model for printing.
- **Wheelstop Options**
There are four different options for wheelstops available for use. Concrete and timber are shown on this template drawing. Adjust the template drawing to fit the project.

Applicable SCRs

- None

Typical Pay Item Used

- 60915-#### Wheelstop, concrete/timber/recycled plastic/rubber [EACH]

Updates

- **June 2021**
 - Updated for OpenRoads Designer
- **October 2023**
 - Updated border; updated to international foot seed

PROJECT	SHEET NUMBER
PROJECT NUMBER PROJECT NAME	

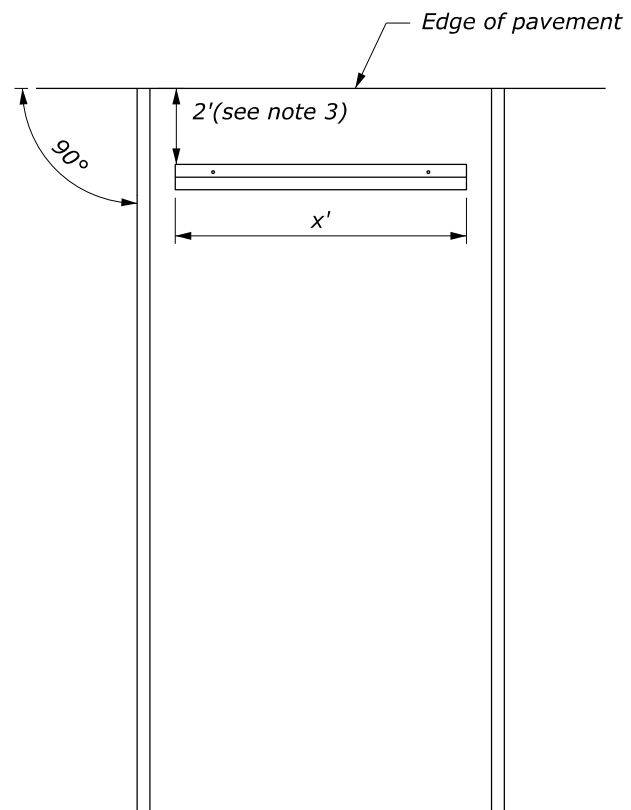
NOTE:

1. Center wheelstops between and perpendicular to stall lines.
2. Variations in wheelstops will be allowed to meet manufacturer's standards with approval.
3. Increase distance for walls and other obstructions.

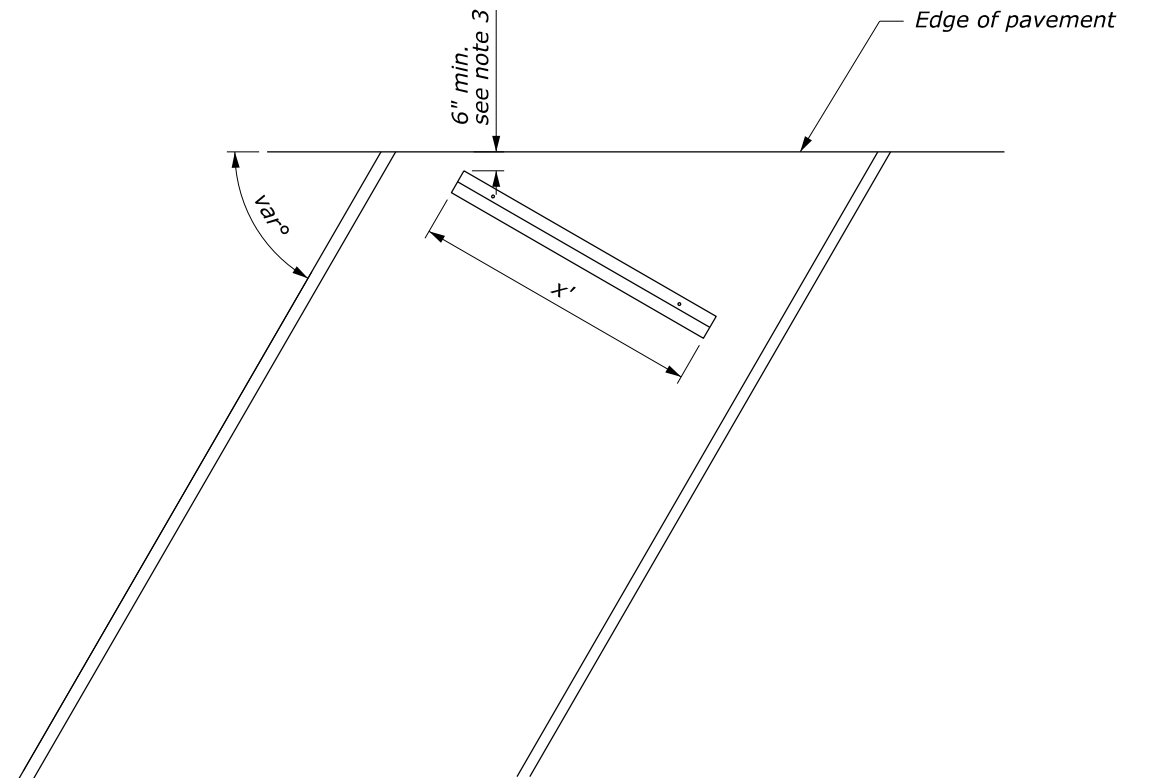
K:\CADD_Coordinator\ORD Drawings\Templates\FP24\SP609-B.dgn [SP 609-B]
5 June 2024 6:46 AM

NO SCALE

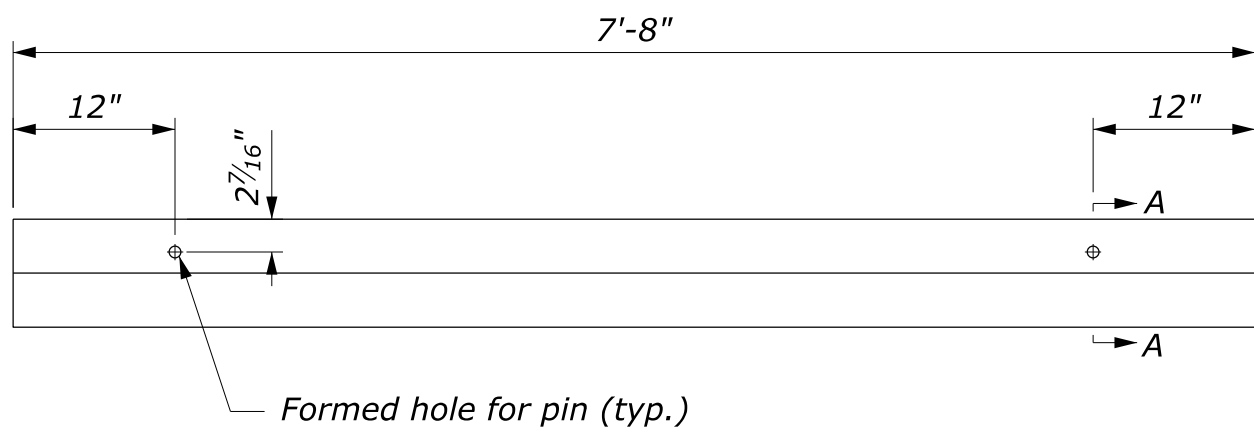
WHEELSTOP DETAILS	SPECIAL 609-B
--------------------------	------------------



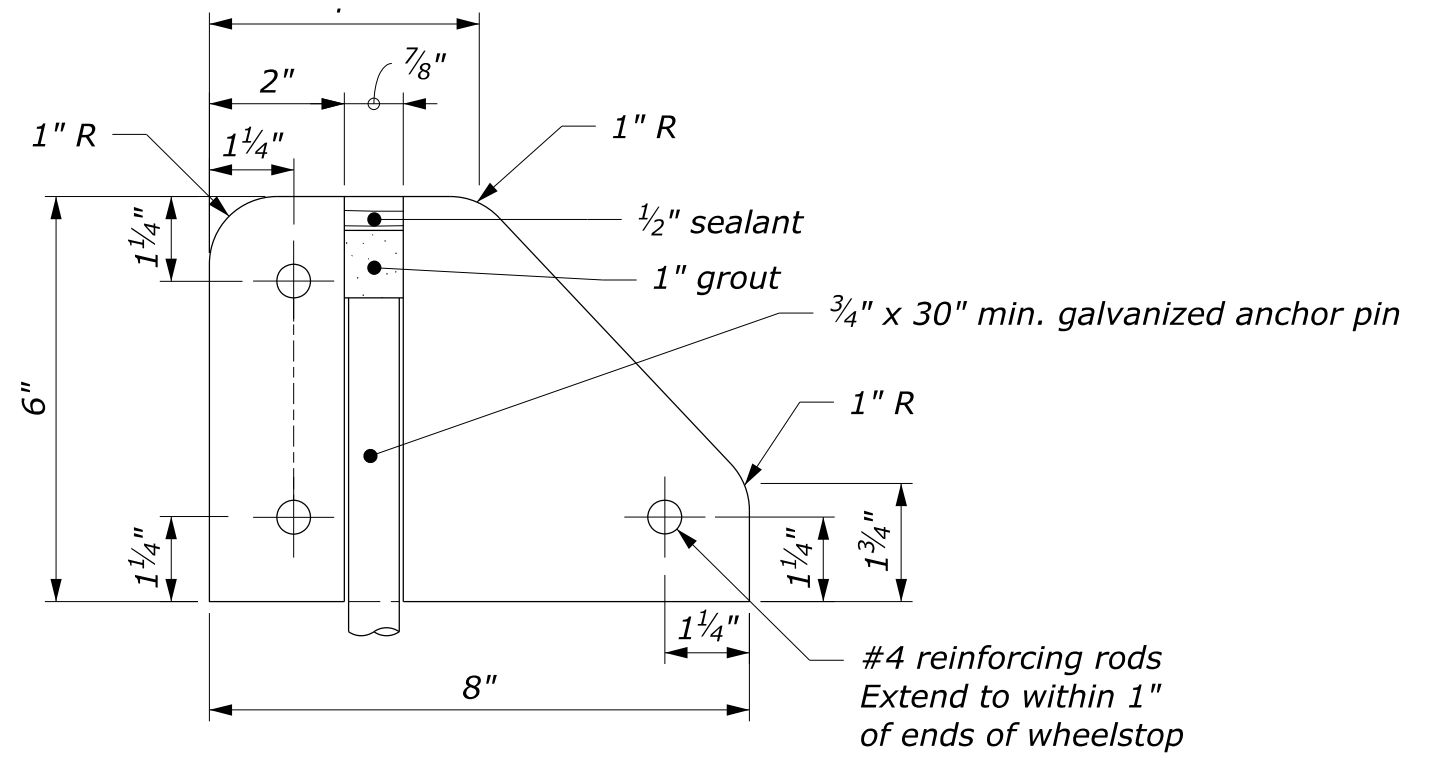
**HEAD-ON PARKING
WHEELSTOP PLACEMENT**



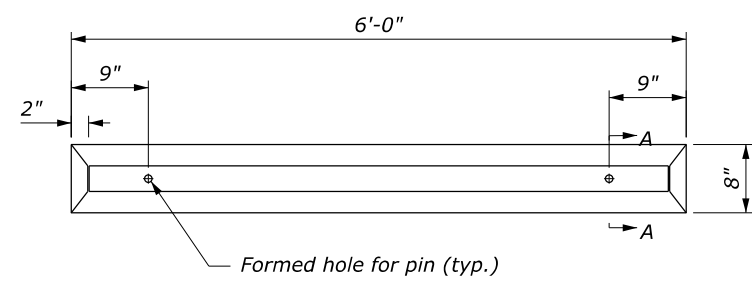
**ANGULAR PARKING
WHEELSTOP PLACEMENT**



CONCRETE WHEELSTOP



SECTION A-A



CONCRETE WHEELSTOP

